

## Product datasheet for **TA329137**

### TRAF6 Rabbit Polyclonal Antibody

#### Product data:

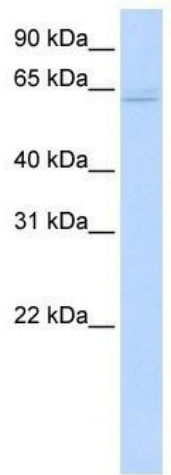
|                         |   |
|-------------------------|---|
| Product Type:           | Primary Antibodies  |
| Applications:           | WB  |
| Recommended Dilution:   | WB  |
| Reactivity:             | Human   |
| Host:                   | Rabbit  |
| Isotype:                | IgG   |
| Clonality:              | Polyclonal  |
| Immunogen:              | The immunogen for anti-TRAF6 antibody: synthetic peptide directed towards the middle region of human TRAF6. Synthetic peptide located within the following region: YVTFMHLEALRQRTFIKDDTLLVRCEVSTRFDMGSLRREGFQPRSTDAGV |
| Formulation:            | Liquid. Purified antibody supplied in 1x PBS buffer with 0.09% (w/v) sodium azide and 2% sucrose.<br><i>Note that this product is shipped as lyophilized powder to China customers.</i>                               |
| Conjugation:            | Unconjugated  |
| Storage:                | Store at -20°C as received.   |
| Stability:              | Stable for 12 months from date of receipt.  |
| Predicted Protein Size: | 59 kDa  |
| Gene Name:              | TNF receptor associated factor 6  |
| Database Link:          | <a href="#">NP_004611</a><br><a href="#">Entrez Gene 7189 Human</a><br><a href="#">Q9Y4K3</a>   |



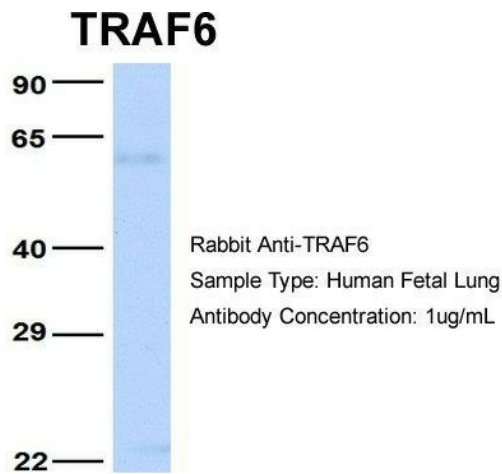
[View online »](#)

|                          |   |
|--------------------------|---|
| <b>Background:</b>       | <p>TRAF6 is a member of the TNF receptor associated factor (TRAF) protein family. TRAF proteins are associated with, and mediate signal transduction from members of the TNF receptor superfamily. This protein mediates the signaling not only from the members of the TNF receptor superfamily, but also from the members of the Toll/IL-1 family. Signals from receptors such as CD40, TNFSF11/RANCE and IL-1 have been shown to be mediated by this protein. This protein also interacts with various protein kinases including IRAK1/IRAK, SRC and PKCzeta, which provides a link between distinct signaling pathways. This protein functions as a signal transducer in the NF-kappaB pathway that activates I kappaB kinase (IKK) in response to proinflammatory cytokines. The interaction of this protein with UBE2N/UBC13, and UBE2V1/UEV1A, which are ubiquitin conjugating enzymes catalyzing the formation of polyubiquitin chains, has been found to be required for IKK activation by this protein. The protein encoded by this gene is a member of the TNF receptor associated factor (TRAF) protein family. TRAF proteins are associated with, and mediate signal transduction from members of the TNF receptor superfamily. This protein mediates the signaling not only from the members of the TNF receptor superfamily, but also from the members of the Toll/IL-1 family. Signals from receptors such as CD40, TNFSF11/RANCE and IL-1 have been shown to be mediated by this protein. This protein also interacts with various protein kinases including IRAK1/IRAK, SRC and PKCzeta, which provides a link between distinct signaling pathways. This protein functions as a signal transducer in the NF-kappaB pathway that activates I kappaB kinase (IKK) in response to proinflammatory cytokines. The interaction of this protein with UBE2N/UBC13, and UBE2V1/UEV1A, which are ubiquitin conjugating enzymes catalyzing the formation of polyubiquitin chains, has been found to be required for IKK activation by this protein. Two alternatively spliced transcript variants encoding identical proteins have been reported.</p> |
| <b>Synonyms:</b>         | MGC:3310; RNF85   |
| <b>Note:</b>             | Immunogen sequence homology: Pig: 100%; Rat: 100%; Horse: 100%; Human: 100%; Mouse: 100%; Bovine: 100%; Rabbit: 100%  |
| <b>Protein Families:</b> | Druggable Genome  |
| <b>Protein Pathways:</b> | Endocytosis, MAPK signaling pathway, Neurotrophin signaling pathway, NOD-like receptor signaling pathway, Pathways in cancer, RIG-I-like receptor signaling pathway, Small cell lung cancer, Toll-like receptor signaling pathway, Ubiquitin mediated proteolysis   |

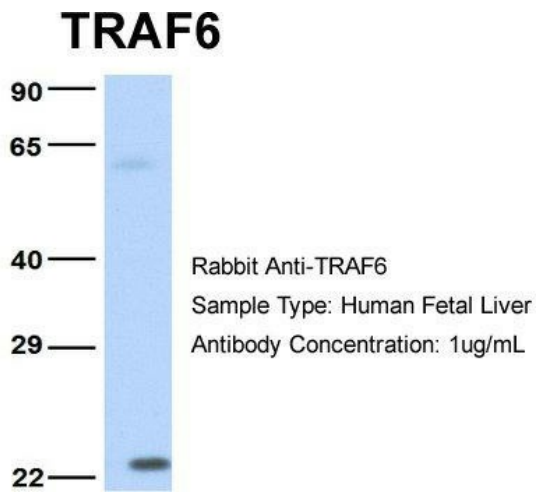
Product images:



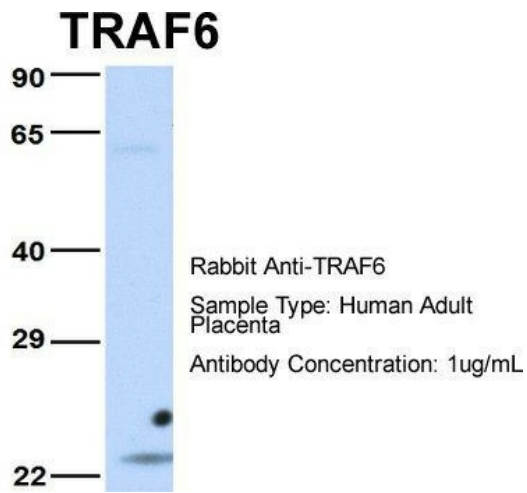
WB Suggested Anti-TRAF6 Antibody Titration: 0.2-1 ug/ml; ELISA Titer: 1:312500; Positive Control: 293T cell lysate



Host: Rabbit; Target Name: TRAF6; Sample Tissue: Human Fetal Lung; Antibody Dilution: 1.0ug/ml



Host: Rabbit; Target Name: TRAF6; Sample  
Tissue: Human Fetal Liver; Antibody Dilution:  
1.0ug/ml



Host: Rabbit; Target Name: TRAF6; Sample  
Tissue: Human Adult Placenta; Antibody Dilution:  
1.0ug/ml