

Product datasheet for **TA329136**

SKP2 Rabbit Polyclonal Antibody

Product data:

Product Type:	Primary Antibodies
Applications:	WB
Recommended Dilution:	WB
Reactivity:	Human
Host:	Rabbit
Isotype:	IgG
Clonality:	Polyclonal
Immunogen:	The immunogen for Anti-SKP2 antibody is: synthetic peptide directed towards the C-terminal region of Human SKP2. Synthetic peptide located within the following region: TLQLLKEALPHLQINCSHFHTTIARPTIGNKKNQEIWGIKRLTLQKPSCL
Formulation:	Liquid. Purified antibody supplied in 1x PBS buffer with 0.09% (w/v) sodium azide and 2% sucrose. <i>Note that this product is shipped as lyophilized powder to China customers.</i>
Purification:	Affinity Purified
Conjugation:	Unconjugated
Storage:	Store at -20°C as received.
Stability:	Stable for 12 months from date of receipt.
Predicted Protein Size:	23 kDa
Gene Name:	S-phase kinase-associated protein 2, E3 ubiquitin protein ligase
Database Link:	NP_005974 Entrez Gene 6502 Human Q13309



[View online »](#)

Background:

This gene encodes a member of the F-box protein family which is characterized by an approximately 40 amino acid motif, the F-box. The F-box proteins constitute one of the four subunits of ubiquitin protein ligase complex called SCFs (SKP1-cullin-F-box), which function in phosphorylation-dependent ubiquitination. The F-box proteins are divided into 3 classes: Fbws containing WD-40 domains, Fbls containing leucine-rich repeats, and Fbxs containing either different protein-protein interaction modules or no recognizable motifs. The protein encoded by this gene belongs to the Fbls class; in addition to an F-box, this protein contains 10 tandem leucine-rich repeats. This protein is an essential element of the cyclin A-CDK2 S-phase kinase. It specifically recognizes phosphorylated cyclin-dependent kinase inhibitor 1B (CDKN1B, also referred to as p27 or KIP1) predominantly in S phase and interacts with S-phase kinase-associated protein 1 (SKP1 or p19). In addition, this gene is established as a protooncogene causally involved in the pathogenesis of lymphomas.

Synonyms:

FBL1; FBXL1; FLB1; p45

Note:

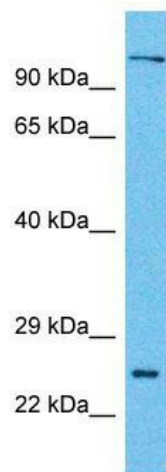
Immunogen sequence homology: Pig: 100%; Human: 100%; Bovine: 100%; Rabbit: 100%; Dog: 92%; Horse: 92%; Guinea pig: 83%; Rat: 75%

Protein Families:

Druggable Genome

Protein Pathways:

Acute myeloid leukemia, Apoptosis, Cell cycle, Oocyte meiosis, p53 signaling pathway, Pathways in cancer, Progesterone-mediated oocyte maturation, Small cell lung cancer, Ubiquitin mediated proteolysis

Product images:

Host: Rabbit; Target Name: SKP2; Sample Tissue: Colorectal Tumor lysates; Antibody Dilution: 1.0ug/ml