

Product datasheet for **TA329135**

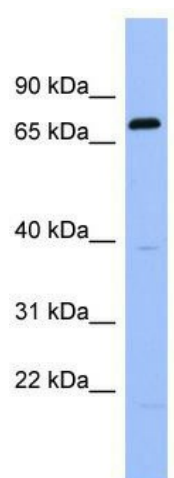
RGS9 Rabbit Polyclonal Antibody

Product data:

Product Type:	Primary Antibodies
Applications:	WB
Recommended Dilution:	WB
Reactivity:	Human
Host:	Rabbit
Isotype:	IgG
Clonality:	Polyclonal
Immunogen:	The immunogen for anti-RGS9 antibody: synthetic peptide directed towards the middle region of human RGS9. Synthetic peptide located within the following region: LKSKRVANFFQIKMDVPTGSGTCLMDSADAGTGESGDRATEKEVICPWES
Formulation:	Liquid. Purified antibody supplied in 1x PBS buffer with 0.09% (w/v) sodium azide and 2% sucrose.
Conjugation:	Unconjugated
Storage:	Store at -20°C as received.
Stability:	Stable for 12 months from date of receipt.
Predicted Protein Size:	77 kDa
Gene Name:	regulator of G-protein signaling 9
Database Link:	NP_003826 Entrez Gene 8787 Human O75916
Background:	RGS9 is a member of the RGS family of signaling proteins that suppress the activity of G proteins by promoting their deactivation.
Synonyms:	PERRS; RGS9L
Note:	Immunogen sequence homology: Human: 100%; Pig: 92%; Guinea pig: 92%; Rat: 85%; Horse: 85%
Protein Families:	Druggable Genome



[View online »](#)

Product images:

WB Suggested Anti-RGS9 Antibody Titration: 0.2-1 ug/ml; ELISA Titer: 1:62500; Positive Control: Human Spleen