

## Product datasheet for TA329134

### RGS7 Rabbit Polyclonal Antibody

#### Product data:

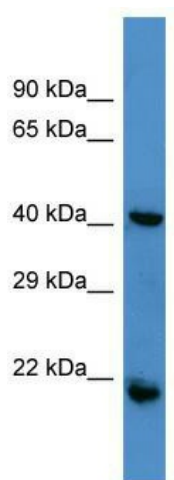
Product Type:	Primary Antibodies
Applications:	WB
Recommended Dilution:	WB
Reactivity:	Human
Host:	Rabbit
Isotype:	IgG
Clonality:	Polyclonal
Immunogen:	The immunogen for Anti-RGS7 antibody is: synthetic peptide directed towards the N-terminal region of Human RGS7. Synthetic peptide located within the following region: GNNYGQTSNGVADESPNMLVYRKMEDVIARMQDEKNGIPIRTVKSFLSKI
Formulation:	Liquid. Purified antibody supplied in 1x PBS buffer with 0.09% (w/v) sodium azide and 2% sucrose.
Purification:	Affinity Purified
Conjugation:	Unconjugated
Storage:	Store at -20°C as received.
Stability:	Stable for 12 months from date of receipt.
Predicted Protein Size:	46 kDa
Gene Name:	regulator of G-protein signaling 7
Database Link:	<a href="#">NP_002915</a> <a href="#">Entrez Gene 6000 Human P49802</a>
Background:	RGS7 inhibits signal transduction by increasing the GTPase activity of G protein alpha subunits thereby driving them into their inactive GDP-bound form. Activity on G(o)-alpha is specifically enhanced by the RGS6/GNG5 dimer. RGS7 may play a role in synaptic vesicle exocytosis and may play important role in the rapid regulation of neuronal excitability and the cellular responses to short-lived stimulations.
Synonyms:	OTTHUMP00000037994; regulator of G-protein signaling 7; regulator of G-protein signaling RGS7; regulator of G-protein signalling 7


[View online »](#)

**Note:** Immunogen sequence homology: Human: 100%; Mouse: 100%; Bovine: 100%; Rat: 92%

**Protein Families:** Druggable Genome

**Product images:**



Host: Rabbit; Target Name: RGS7; Sample Tissue: Jurkat Whole cell lysates; Antibody Dilution: 1.0ug/ml