

Product datasheet for **TA329133**

RGS4 Rabbit Polyclonal Antibody

Product data:

Product Type:	Primary Antibodies
Applications:	WB
Recommended Dilution:	WB
Reactivity:	Human
Host:	Rabbit
Isotype:	IgG
Clonality:	Polyclonal
Immunogen:	The immunogen for anti-RGS4 antibody: synthetic peptide directed towards the C terminal of human RGS4. Synthetic peptide located within the following region: EAQKIFNLMEKDSYRRFLKSRFYLDLVNPSSCGAEKQKGAKSSADCASL
Formulation:	Liquid. Purified antibody supplied in 1x PBS buffer with 0.09% (w/v) sodium azide and 2% sucrose. <i>Note that this product is shipped as lyophilized powder to China customers.</i>
Conjugation:	Unconjugated
Storage:	Store at -20°C as received.
Stability:	Stable for 12 months from date of receipt.
Predicted Protein Size:	23 kDa
Gene Name:	regulator of G-protein signaling 4
Database Link:	NP_005604 Entrez Gene 5999 Human P49798



[View online »](#)

Background:

Regulator of G protein signaling (RGS) family members are regulatory molecules that act as GTPase activating proteins (GAPs) for G alpha subunits of heterotrimeric G proteins. RGS proteins are able to deactivate G protein subunits of the Gi alpha, Go alpha and Gq alpha subtypes. They drive G proteins into their inactive GDP-bound forms. Regulator of G protein signaling 4 belongs to this family. All RGS proteins share a conserved 120-amino acid sequence termed the RGS domain. This protein negatively regulates signaling upstream or at the level of the heterotrimeric G protein and is localized in the cytoplasm. Regulator of G protein signaling (RGS) family members are regulatory molecules that act as GTPase activating proteins (GAPs) for G alpha subunits of heterotrimeric G proteins. RGS proteins are able to deactivate G protein subunits of the Gi alpha, Go alpha and Gq alpha subtypes. They drive G proteins into their inactive GDP-bound forms. Regulator of G protein signaling 4 belongs to this family. All RGS proteins share a conserved 120-amino acid sequence termed the RGS domain. Regulator of G protein signaling 4 protein is 37% identical to RGS1 and 97% identical to rat Rgs4. This protein negatively regulate signaling upstream or at the level of the heterotrimeric G protein and is localized in the cytoplasm.

Synonyms:

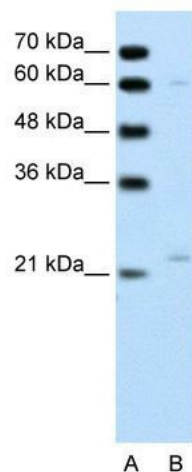
RGP4; SCZD9

Note:

Immunogen sequence homology: Rat: 100%; Human: 100%; Mouse: 100%; Pig: 93%; Horse: 93%; Guinea pig: 93%; Dog: 92%; Sheep: 86%; Bovine: 86%; Rabbit: 86%

Protein Families:

Druggable Genome

Product images:

WB Suggested Anti-RGS4 Antibody Titration: 0.2-1 ug/ml; ELISA Titer: 1:312500; Positive Control: Jurkat cell lysate