

Product datasheet for **TA329131**

TANK Rabbit Polyclonal Antibody

Product data:

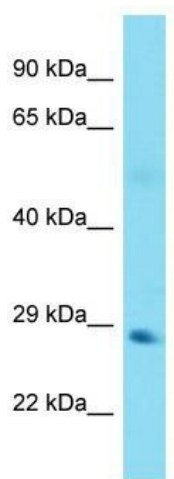
Product Type:	Primary Antibodies
Applications:	WB
Recommended Dilution:	WB
Reactivity:	Human
Host:	Rabbit
Isotype:	IgG
Clonality:	Polyclonal
Immunogen:	The immunogen for Anti-TANK antibody is: synthetic peptide directed towards the N-terminal region of Human TANK. Synthetic peptide located within the following region: ILYSDATGRRGMDKNIGEQLNKAYEAFRQACMDRDSAVKELQKKTENYEQ
Formulation:	Liquid. Purified antibody supplied in 1x PBS buffer with 0.09% (w/v) sodium azide and 2% sucrose. <i>Note that this product is shipped as lyophilized powder to China customers.</i>
Purification:	Affinity Purified
Conjugation:	Unconjugated
Storage:	Store at -20°C as received.
Stability:	Stable for 12 months from date of receipt.
Predicted Protein Size:	26 kDa
Gene Name:	TRAF family member associated NFKB activator
Database Link:	NP_004171 Entrez Gene 10010 Human Q92844
Background:	The function of this protein remains unknown.
Synonyms:	I-TRAF; ITRAF; TRAF2
Note:	Immunogen sequence homology: Dog: 100%; Pig: 100%; Rat: 100%; Horse: 100%; Human: 100%; Bovine: 100%; Rabbit: 100%; Guinea pig: 100%; Mouse: 92%
Protein Families:	Druggable Genome



[View online »](#)

Protein Pathways: RIG-I-like receptor signaling pathway

Product images:



Host: Rabbit; Target Name: TANK; Sample Tissue: Lung Tumor lysates; Antibody Dilution: 1.0ug/ml