

Product datasheet for TA329127

Ccna2 Rabbit Polyclonal Antibody

Product data:

Product Type:	Primary Antibodies
Applications:	WB
Recommended Dilution:	WB, IHC
Reactivity:	Human, Rat
Host:	Rabbit
Isotype:	IgG
Clonality:	Polyclonal
Immunogen:	The immunogen for anti-Ccna2 antibody: synthetic peptide corresponding to a region of Rat. Synthetic peptide located within the following region: TGYTLESCLKPCLMDLHQTYLKAPQHAQQSIREKYKHSKYHSVLLNPPET
Formulation:	Liquid. Purified antibody supplied in 1x PBS buffer with 0.09% (w/v) sodium azide and 2% sucrose. <i>Note that this product is shipped as lyophilized powder to China customers.</i>
Conjugation:	Unconjugated
Storage:	Store at -20°C as received.
Stability:	Stable for 12 months from date of receipt.
Predicted Protein Size:	47 kDa
Gene Name:	cyclin A2
Database Link:	NP_446154 Entrez Gene 890 Human Entrez Gene 114494 Rat
Background:	The function of Ccna2 remains unknown.
Synonyms:	CCN1; CCNA; Cyclin-A
Note:	Immunogen sequence homology: Pig: 100%; Rat: 100%; Human: 100%; Sheep: 100%; Bovine: 100%; Rabbit: 100%; Guinea pig: 100%; Dog: 92%; Horse: 92%; Mouse: 92%; Yeast: 82%; Zebrafish: 77%



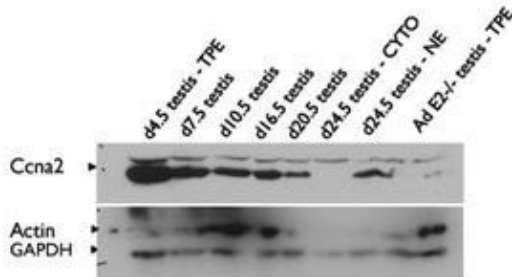
[View online »](#)

Product images:



WB Suggested Anti-Ccna2 Antibody Titration: 0.2-1 ug/ml; ELISA Titer: 1:312500; Positive Control: Rat Muscle

Immunoblot of testis extracts – TPE (total protein extract), NE (nuclear extract), CYTO (cytoplasmic fraction)



Ccna2 antibody - C-terminal region validated by WB using testis