

## Product datasheet for **TA329126**

### Cdk8 Rabbit Polyclonal Antibody

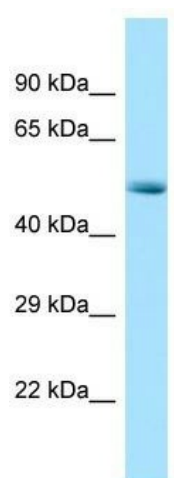
#### Product data:

Product Type:	Primary Antibodies
Applications:	WB
Recommended Dilution:	WB
Reactivity:	Rat
Host:	Rabbit
Isotype:	IgG
Clonality:	Polyclonal
Immunogen:	The immunogen for Anti-RGD1560888 antibody is: synthetic peptide directed towards the N-terminal region of Rat RGD1560888. Synthetic peptide located within the following region: MDYDFKVKLSSERERVEDLFEYEGCKVGRGTYGHVYKAKRKDGKDDKDYA
Formulation:	Liquid. Purified antibody supplied in 1x PBS buffer with 0.09% (w/v) sodium azide and 2% sucrose. <i>Note that this product is shipped as lyophilized powder to China customers.</i>
Conjugation:	Unconjugated
Storage:	Store at -20°C as received.
Stability:	Stable for 12 months from date of receipt.
Predicted Protein Size:	51 kDa
Gene Name:	cyclin-dependent kinase 8
Database Link:	<a href="#">NP_001102531</a> <a href="#">Entrez Gene 498140 Rat</a>
Background:	The function of this protein remains unknown.
Synonyms:	K35; MGC126074; MGC126075
Note:	Immunogen sequence homology: Dog: 100%; Rat: 100%; Horse: 100%; Human: 100%; Mouse: 100%; Rabbit: 100%; Zebrafish: 100%; Pig: 75%; Guinea pig: 75%



[View online »](#)

## Product images:



Host: Rabbit; Target Name: RGD1560888; Sample  
Tissue: Rat Pancreas lysates; Antibody Dilution:  
1.0ug/ml