

## Product datasheet for **TA329125**

### **GAS41 (YEATS4) Rabbit Polyclonal Antibody**

#### **Product data:**

<b>Product Type:</b>	Primary Antibodies
<b>Applications:</b>	IHC, WB
<b>Recommended Dilution:</b>	WB, IHC
<b>Reactivity:</b>	Human
<b>Host:</b>	Rabbit
<b>Isotype:</b>	IgG
<b>Clonality:</b>	Polyclonal
<b>Immunogen:</b>	The immunogen for anti-YEATS4 antibody: synthetic peptide directed towards the middle region of human YEATS4. Synthetic peptide located within the following region: SRQLTLGAYKHETEF AELEVKTREKLEAAKKKTSFEIAELKERLKASRET
<b>Formulation:</b>	Liquid. Purified antibody supplied in 1x PBS buffer with 0.09% (w/v) sodium azide and 2% sucrose. <i>Note that this product is shipped as lyophilized powder to China customers.</i>
<b>Conjugation:</b>	Unconjugated
<b>Storage:</b>	Store at -20°C as received.
<b>Stability:</b>	Stable for 12 months from date of receipt.
<b>Predicted Protein Size:</b>	25 kDa
<b>Gene Name:</b>	YEATS domain containing 4
<b>Database Link:</b>	<a href="#">NP_006521</a> <a href="#">Entrez Gene 8089 Human</a> <a href="#">O95619</a>
<b>Background:</b>	YEATS4 is found in the nucleoli. It has high sequence homology to human MLLT1, and yeast and human MLLT3 proteins. Both MLLT1 and MLLT3 proteins belong to a class of transcription factors, indicating that the encoded protein might also represent a transcription factor. This protein is thought to be required for RNA transcription. This gene has been shown to be amplified in tumors.
<b>Synonyms:</b>	4930573H17Rik; B230215M10Rik; GAS41; NUBI-1; YAF9

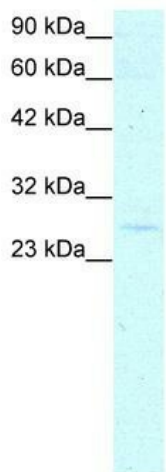


[View online »](#)

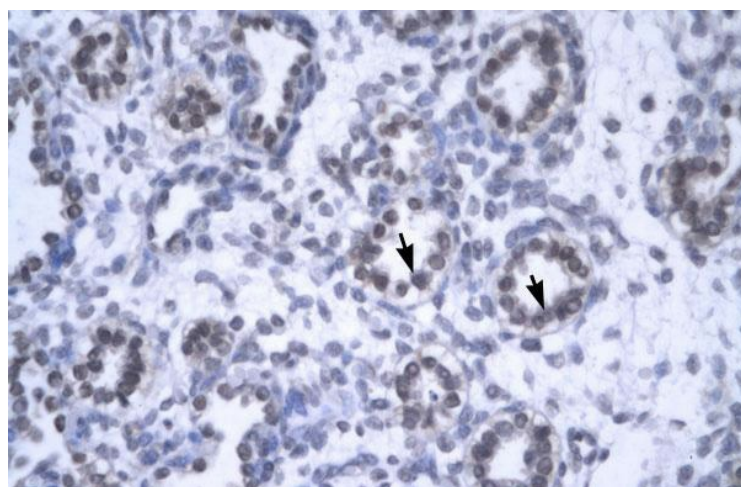
**Note:** Immunogen sequence homology: Dog: 100%; Pig: 100%; Rat: 100%; Horse: 100%; Human: 100%; Mouse: 100%; Sheep: 100%; Bovine: 100%; Rabbit: 100%; Guinea pig: 100%; Zebrafish: 79%

**Protein Families:** Druggable Genome, Transcription Factors

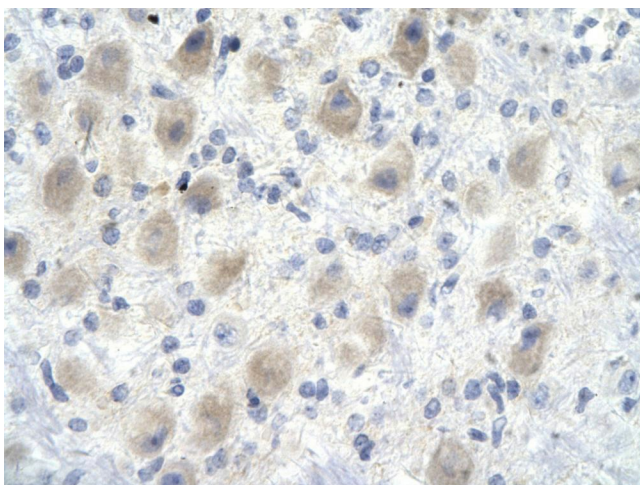
**Product images:**



WB Suggested Anti-YEATS4 Antibody Titration: 0.2-1 ug/ml; ELISA Titer: 1:62500; Positive Control: Jurkat cell lysate YEATS4 is supported by BioGPS gene expression data to be expressed in Jurkat



Rabbit Anti-YEATS4 Antibody; Paraffin Embedded Tissue: Human Lung; Cellular Data: Alveolar cells; Antibody Concentration: 4.0-8.0 ug/ml; Magnification: 400X



Rabbit Anti-YEATS4 antibody; Paraffin Embedded Tissue: Human Brain cell; Cellular Data: Epithelial cells of renal tubule; Antibody Concentration: 4.0-8.0 ug/ml; Magnification: 400X