

## Product datasheet for **TA329119**

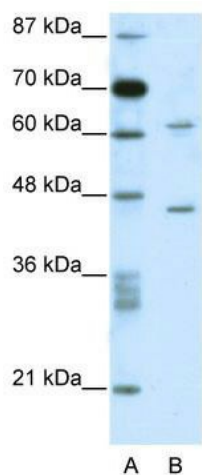
### C1orf25 (TRMT1L) Rabbit Polyclonal Antibody

#### Product data:

Product Type:	Primary Antibodies
Applications:	WB
Recommended Dilution:	WB
Reactivity:	Human
Host:	Rabbit
Isotype:	IgG
Clonality:	Polyclonal
Immunogen:	The immunogen for anti-C1ORF25 antibody: synthetic peptide directed towards the N terminal of human C1ORF25. Synthetic peptide located within the following region: QAPALSPSLASAPEEAKSKRHISIQRLADLENLAFVTDGNFDSASSLNS
Formulation:	Liquid. Purified antibody supplied in 1x PBS buffer with 0.09% (w/v) sodium azide and 2% sucrose. <i>Note that this product is shipped as lyophilized powder to China customers.</i>
Conjugation:	Unconjugated
Storage:	Store at -20°C as received.
Stability:	Stable for 12 months from date of receipt.
Predicted Protein Size:	61 kDa
Gene Name:	tRNA methyltransferase 1 like
Database Link:	<a href="#">NP_112196</a> <a href="#">Entrez Gene 81627 Human Q7Z2T5</a>
Background:	Although C1orf25 is similar to N2,N2-dimethylguanosine tRNA methyltransferase from other organisms, the true function of C1orf25 protein is not known.
Synonyms:	bG120K12.3; C1orf25; MST070; MSTP070; TRM1L
Note:	Immunogen sequence homology: Human: 100%; Rat: 93%; Mouse: 92%; Dog: 86%; Pig: 86%; Horse: 86%; Bovine: 86%



[View online »](#)

**Product images:**

WB Suggested Anti-C1ORF25 Antibody Titration:  
0.2-1 ug/ml; ELISA Titer: 1:312500; Positive  
Control: Jurkat cell lysate