

Product datasheet for **TA329117**

TSC22 domain family, member 4 (TSC22D4) Rabbit Polyclonal Antibody

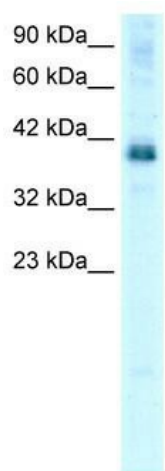
Product data:

Product Type:	Primary Antibodies
Applications:	IHC, WB
Recommended Dilution:	WB, IHC
Reactivity:	Human
Host:	Rabbit
Isotype:	IgG
Clonality:	Polyclonal
Immunogen:	The immunogen for anti-TSC22D4 antibody: synthetic peptide directed towards the N terminal of human TSC22D4. Synthetic peptide located within the following region: SGGKKKSSFQITSVTTDYEGPGSPGASDPPTQPPTGPPRLPNGEPPSD
Formulation:	Liquid. Purified antibody supplied in 1x PBS buffer with 0.09% (w/v) sodium azide and 2% sucrose. <i>Note that this product is shipped as lyophilized powder to China customers.</i>
Conjugation:	Unconjugated
Storage:	Store at -20°C as received.
Stability:	Stable for 12 months from date of receipt.
Predicted Protein Size:	41 kDa
Gene Name:	TSC22 domain family member 4
Database Link:	NP_112197 Entrez Gene 81628 Human Q9Y3Q8
Background:	TSC22D4 is a leucine zipper-containing protein that is highly conserved during evolution. It is transcriptionally up-regulated by many different stimuli, including anti-cancer drugs and growth inhibitors. TSC22D4 may play a suppressive role in tumorigenesis.
Synonyms:	THG-1; THG1; TILZ2
Note:	Immunogen sequence homology: Human: 100%; Pig: 93%; Guinea pig: 93%; Dog: 90%; Rat: 77%
Protein Families:	Transcription Factors

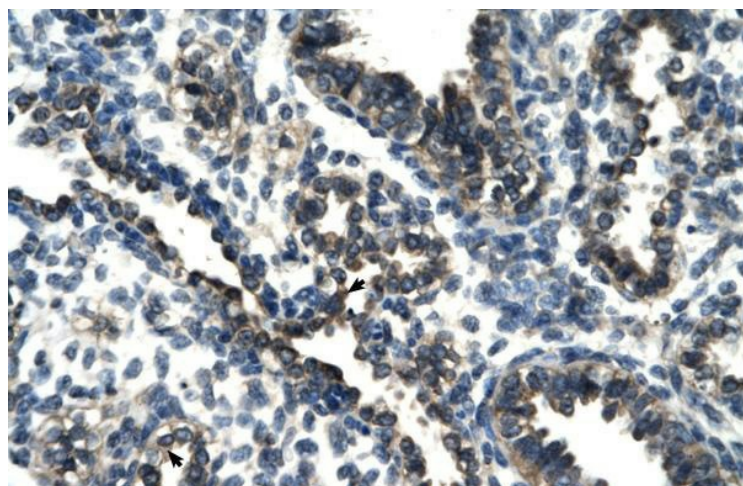


[View online »](#)

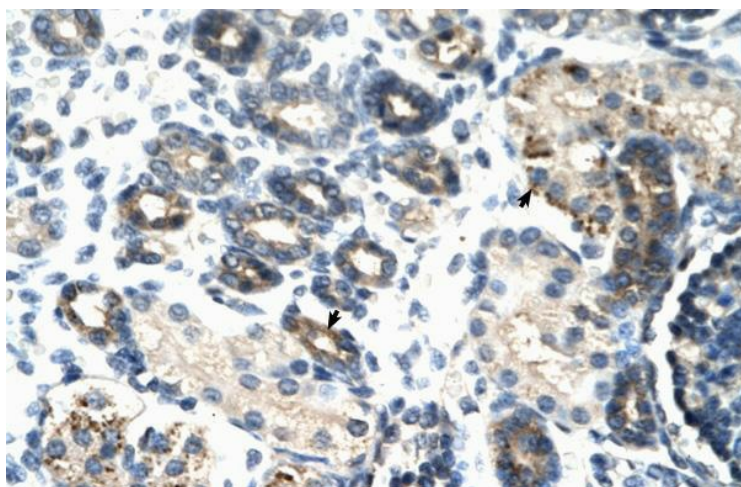
Product images:



WB Suggested Anti-TSC22D4 Antibody Titration: 0.5ug/ml; ELISA Titer: 1:62500; Positive Control: HepG2 cell lysate



Rabbit Anti-TSC22D4 Antibody; Paraffin Embedded Tissue: Human Lung; Cellular Data: Alveolar cells; Antibody Concentration: 4.0-8.0 ug/ml; Magnification: 400X



Rabbit Anti-TSC22D4 Antibody; Paraffin Embedded Tissue: Human Kidney; Cellular Data: Epithelial cells of renal tubule; Antibody Concentration: 4.0-8.0 ug/ml; Magnification: 400X