

Product datasheet for **TA329115**

ELL Rabbit Polyclonal Antibody

Product data:

Product Type:	Primary Antibodies
Applications:	IHC, WB
Recommended Dilution:	WB, IHC
Reactivity:	Human
Host:	Rabbit
Isotype:	IgG
Clonality:	Polyclonal
Immunogen:	The immunogen for anti-ELL antibody: synthetic peptide directed towards the C terminal of human ELL. Synthetic peptide located within the following region: TQLDAQLRQLSQGSEEYETTRGQILQEYRKIKKTNYSQEKHRCEYLHS
Formulation:	Liquid. Purified antibody supplied in 1x PBS buffer with 0.09% (w/v) sodium azide and 2% sucrose. <i>Note that this product is shipped as lyophilized powder to China customers.</i>
Conjugation:	Unconjugated
Storage:	Store at -20°C as received.
Stability:	Stable for 12 months from date of receipt.
Predicted Protein Size:	68 kDa
Gene Name:	elongation factor for RNA polymerase II
Database Link:	NP_006523 Entrez Gene 8178 Human P55199
Background:	ELL was shown to encode a previously uncharacterized elongation factor that can increase the catalytic rate of RNA polymerase II transcription by suppressing transient pausing by polymerase at multiple sites along the DNA. Functionally, ELL resembles Elongin (SIII), a transcription elongation factor regulated by the product of the von Hippel-Lindau (VHL) tumor suppressor gene.
Synonyms:	C19orf17; ELL1; MEN; PPP1R68

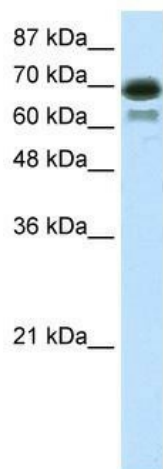


[View online »](#)

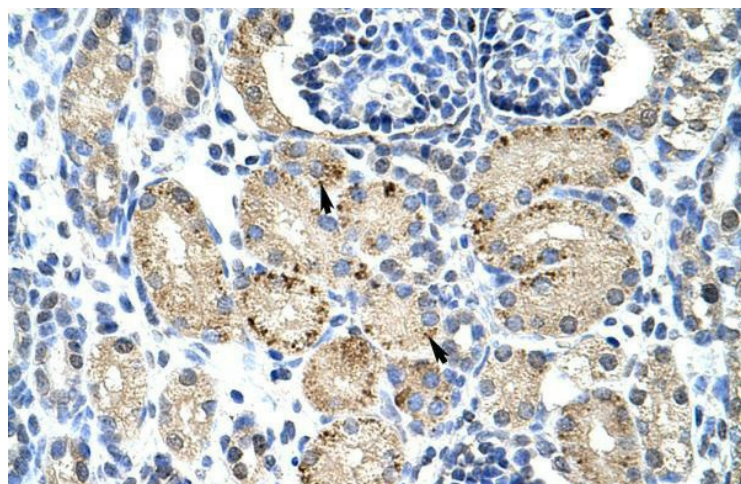
Note: Immunogen sequence homology: Dog: 100%; Horse: 100%; Human: 100%; Bovine: 100%; Rat: 93%; Pig: 86%; Mouse: 86%; Zebrafish: 86%; Guinea pig: 86%

Protein Families: Transcription Factors

Product images:



WB Suggested Anti-ELL Antibody Titration:
7.5ug/ml; ELISA Titer: 1:312500; Positive Control:
Transfected 293T



Rabbit Anti-ELL Antibody; Paraffin Embedded
Tissue: Human Kidney; Cellular Data: Epithelial
cells of renal tubule; Antibody Concentration: 4.0-
8.0 ug/ml; Magnification: 400X