

Product datasheet for **TA329114**

RBM10 Rabbit Polyclonal Antibody

Product data:

Product Type:	Primary Antibodies
Applications:	IHC, WB
Recommended Dilution:	WB, IHC
Reactivity:	Human, Mouse
Host:	Rabbit
Isotype:	IgG
Clonality:	Polyclonal
Immunogen:	The immunogen for anti-RBM10 antibody: synthetic peptide directed towards the N terminal of human RBM10. Synthetic peptide located within the following region: QRRRRRRHRHSPTGPPGFPRDGDYRDQDYRTEQEEEEEEEEDEEEEEKAS
Formulation:	Liquid. Purified antibody supplied in 1x PBS buffer with 0.09% (w/v) sodium azide and 2% sucrose. <i>Note that this product is shipped as lyophilized powder to China customers.</i>
Conjugation:	Unconjugated
Storage:	Store at -20°C as received.
Stability:	Stable for 12 months from date of receipt.
Predicted Protein Size:	104 kDa
Gene Name:	RNA binding motif protein 10
Database Link:	NP_005667 Entrez Gene 8241 Human P98175
Background:	RBM10 contains RNA recognition motif found in a variety of RNA binding proteins, including various hnRNP proteins, proteins implicated in regulation of alternative splicing, and protein components of snRNPs. In vitro studies showed that the rat homolog bound to RNA homopolymers, with a preference for G and U polyribonucleotides. This gene is part of a gene cluster on chromosome Xp11.23, and its 3' end lies within 20 kb upstream of UBE1.
Synonyms:	DXS8237E; GPATC9; GPATCH9; S1-1; TARPS; ZRANB5



[View online »](#)

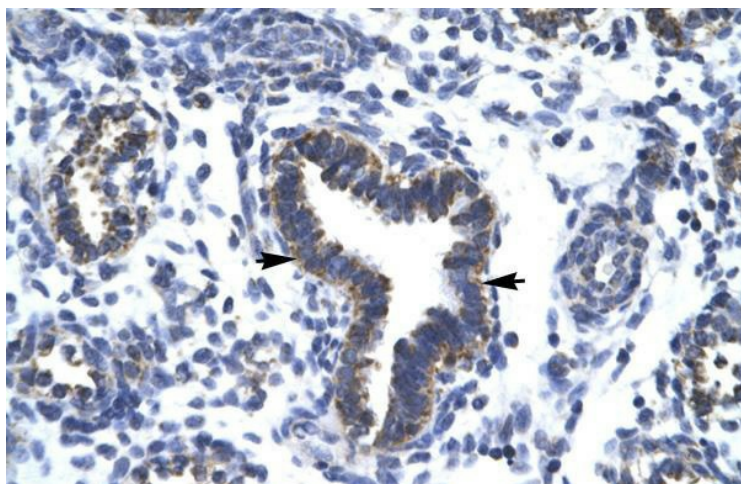
Note: Immunogen sequence homology: Pig: 100%; Rat: 100%; Horse: 100%; Human: 100%; Mouse: 100%; Bovine: 100%; Rabbit: 100%; Guinea pig: 100%; Dog: 92%

Protein Families: Druggable Genome

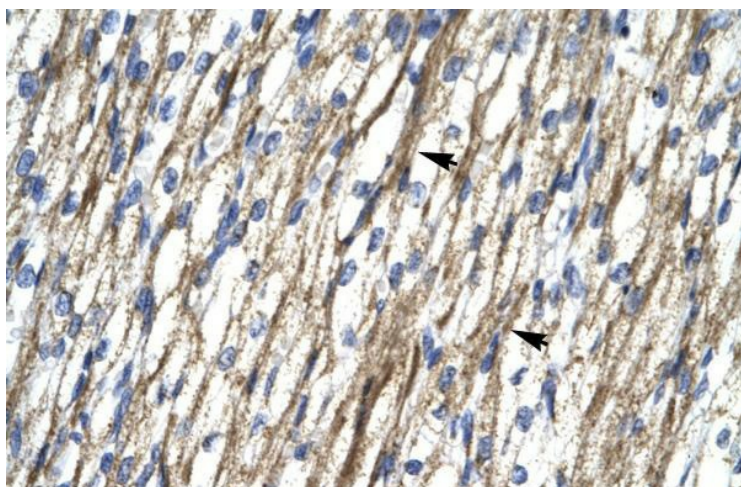
Product images:



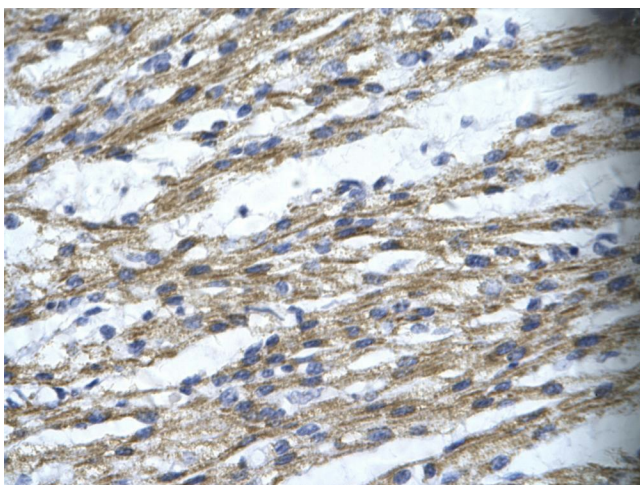
WB Suggested Anti-RBM10 Antibody Titration: 1.4ug/ml; ELISA Titer: 1:1562500; Positive Control: Daudi cell lysate. RBM10 is strongly supported by BioGPS gene expression data to be expressed in Human Daudi cells



Rabbit Anti-RBM10 Antibody; Paraffin Embedded Tissue: Human Lung; Cellular Data: Epithelial cells of bronchiole; Antibody Concentration: 4.0-8.0 ug/ml; Magnification: 400X



Rabbit Anti-RBM10 Antibody; Paraffin Embedded Tissue: Human Heart; Cellular Data: Myocardial cells; Antibody Concentration: 4.0-8.0 ug/ml; Magnification: 400X



Rabbit Anti-RBM10 Antibody; Paraffin Embedded Tissue: Human cardiac cell; Cellular Data: Epithelial cells of renal tubule; Antibody Concentration: 4.0-8.0 ug/ml; Magnification: 400X