

Product datasheet for **TA329111**

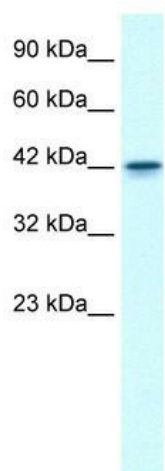
GF11B Rabbit Polyclonal Antibody

Product data:

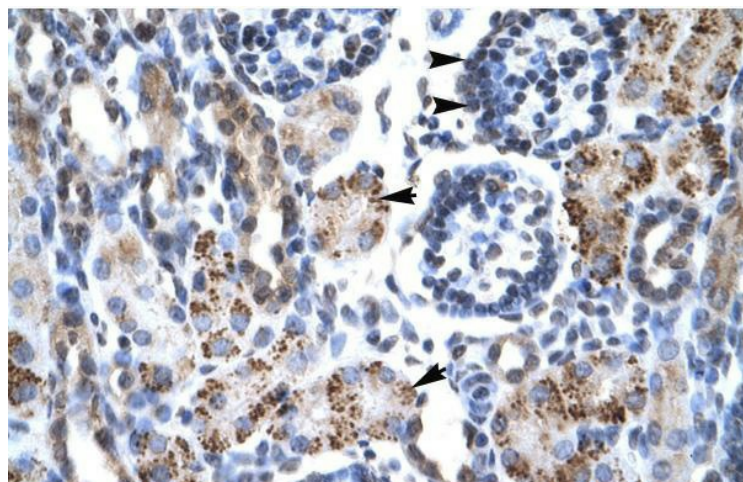
| | |
|--------------------------------|---|
| Product Type: | Primary Antibodies |
| Applications: | IHC, WB |
| Recommended Dilution: | WB, IHC |
| Reactivity: | Human |
| Host: | Rabbit |
| Isotype: | IgG |
| Clonality: | Polyclonal |
| Immunogen: | The immunogen for anti-GF11B antibody: synthetic peptide directed towards the N terminal of human GF11B. Synthetic peptide located within the following region: MPRSFLVKSKMAHTYHQPRVQEDEPLWPPALTPVPRDQAPSNPVLSTLF |
| Formulation: | Liquid. Purified antibody supplied in 1x PBS buffer with 0.09% (w/v) sodium azide and 2% sucrose. <i>Note that this product is shipped as lyophilized powder to China customers.</i> |
| Conjugation: | Unconjugated |
| Storage: | Store at -20°C as received. |
| Stability: | Stable for 12 months from date of receipt. |
| Predicted Protein Size: | 38 kDa |
| Gene Name: | growth factor independent 1B transcriptional repressor |
| Database Link: | NP_004179 Entrez Gene 8328 Human Q5VTD9 |
| Background: | GF11B acts in the late stage of erythroid differentiation as a transcriptional repressor. GATA-1 and NF-Y both contribute to erythroid-specific transcriptional activation of the Gfi-1B promoter. This zinc finger protein mediates erythroid expansion and has a role in normal erythropoiesis. |
| Synonyms: | BDPLT17; ZNF163B |
| Note: | Immunogen sequence homology: Dog: 100%; Horse: 100%; Human: 100%; Pig: 93%; Goat: 83%; Mouse: 83%; Bovine: 83%; Rat: 82% |



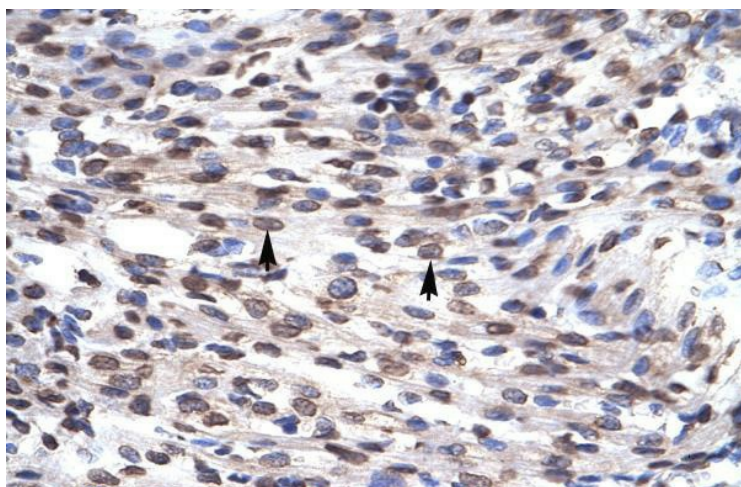
[View online »](#)

Product images:

WB Suggested Anti-GFI1B Antibody Titration: 0.2-1 ug/ml; ELISA Titer: 1:312500; Positive Control: Jurkat cell lysate



Rabbit Anti-GFI1B Antibody; Paraffin Embedded Tissue: Human Kidney; Cellular Data: Epithelial cells of renal tubule and renal corpuscle; Antibody Concentration: 4.0-8.0 ug/ml; Magnification: 400X



Rabbit Anti-GF11B Antibody; Paraffin Embedded Tissue: Human Heart; Cellular Data: Myocardial cells; Antibody Concentration: 4.0-8.0 ug/ml; Magnification: 400X