

## Product datasheet for **TA329109**

### **MAD3 (MXD3) Rabbit Polyclonal Antibody**

#### **Product data:**

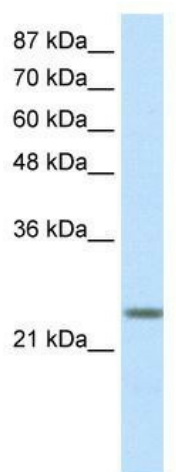
<b>Product Type:</b>	Primary Antibodies
<b>Applications:</b>	WB
<b>Recommended Dilution:</b>	WB
<b>Reactivity:</b>	Human
<b>Host:</b>	Rabbit
<b>Isotype:</b>	IgG
<b>Clonality:</b>	Polyclonal
<b>Immunogen:</b>	The immunogen for anti-MXD3 antibody: synthetic peptide directed towards the N terminal of human MXD3. Synthetic peptide located within the following region: PIHRRKKRPPQAPGAQDSGRSVHNELEKRRRAQLKRCLERLKQQMPLGAD
<b>Formulation:</b>	Liquid. Purified antibody supplied in 1x PBS buffer with 0.09% (w/v) sodium azide and 2% sucrose. <i>Note that this product is shipped as lyophilized powder to China customers.</i>
<b>Conjugation:</b>	Unconjugated
<b>Storage:</b>	Store at -20°C as received.
<b>Stability:</b>	Stable for 12 months from date of receipt.
<b>Predicted Protein Size:</b>	23 kDa
<b>Gene Name:</b>	MAX dimerization protein 3
<b>Database Link:</b>	<a href="#">NP_112590</a> <a href="#">Entrez Gene 83463 Human</a> <a href="#">Q9BW11</a>
<b>Background:</b>	MXD3 contains 1 basic helix-loop-helix (bHLH) domain. It is a transcriptional repressor and binds with MAX to form a sequence-specific DNA-binding protein complex which recognizes the core sequence 5'-CAC[GA]TG-3'. Antagonizes MYC transcriptional activity by competing for MAX and suppresses MYC dependent cell transformation.
<b>Synonyms:</b>	BHLHC13; MAD3; MYX
<b>Note:</b>	Immunogen sequence homology: Human: 100%; Rat: 93%; Horse: 93%; Bovine: 93%; Dog: 86%; Pig: 86%; Rabbit: 86%; Mouse: 85%



[View online »](#)

Protein Families: Druggable Genome, Transcription Factors

### Product images:



WB Suggested Anti-MXD3 Antibody Titration:  
0.5ug/ml; ELISA Titer: 1:312500; Positive Control:  
Transfected 293T