

Product datasheet for **TA329108**

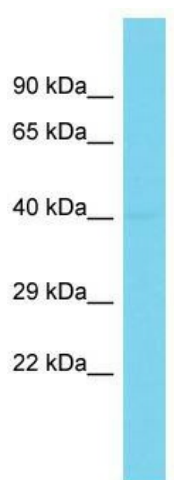
Scrt1 Rabbit Polyclonal Antibody

Product data:

Product Type:	Primary Antibodies
Applications:	WB
Recommended Dilution:	WB
Reactivity:	Rat
Host:	Rabbit
Isotype:	IgG
Clonality:	Polyclonal
Immunogen:	The immunogen for Anti-Scrt1 antibody is: synthetic peptide directed towards the N-terminal region of Rat Scrt1. Synthetic peptide located within the following region: MPRSFLVKKVKLDTFSSADLDSSYGRARSDLGVRLQDKGYLSDYVGPASV
Formulation:	Liquid. Purified antibody supplied in 1x PBS buffer with 0.09% (w/v) sodium azide and 2% sucrose. <i>Note that this product is shipped as lyophilized powder to China customers.</i>
Conjugation:	Unconjugated
Storage:	Store at -20°C as received.
Stability:	Stable for 12 months from date of receipt.
Predicted Protein Size:	38 kDa
Gene Name:	scratch family transcriptional repressor 1
Database Link:	NP_001124042 Entrez Gene 366951 Rat
Background:	The function of this protein remains unknown.
Synonyms:	DKFZp547F072; hScrt; scratch; SCRT
Note:	Immunogen sequence homology: Human: 100%; Pig: 93%; Rat: 93%; Mouse: 93%; Guinea pig: 93%



[View online »](#)

Product images:

Host: Rabbit; Target Name: Scrt1; Sample Tissue: Rat Stomach lysates; Antibody Dilution: 1.0ug/ml