

Product datasheet for **TA329104**

L3MBTL2 Rabbit Polyclonal Antibody

Product data:

Product Type:	Primary Antibodies
Applications:	IHC, WB
Recommended Dilution:	WB, IHC
Reactivity:	Human
Host:	Rabbit
Isotype:	IgG
Clonality:	Polyclonal
Immunogen:	The immunogen for anti-L3MBTL2 antibody: synthetic peptide directed towards the C terminal of human L3MBTL2. Synthetic peptide located within the following region: EYDQWVDCESPDYIPVGWCELTGYQLQPPVAAEPATPLKAKEATKKKKKQ
Formulation:	Liquid. Purified antibody supplied in 1x PBS buffer with 0.09% (w/v) sodium azide and 2% sucrose. <i>Note that this product is shipped as lyophilized powder to China customers.</i>
Conjugation:	Unconjugated
Storage:	Store at -20°C as received.
Stability:	Stable for 12 months from date of receipt.
Predicted Protein Size:	79 kDa
Gene Name:	L3MBTL2 polycomb repressive complex 1 subunit
Database Link:	NP_113676 Entrez Gene 83746 Human Q969R5
Background:	L3MBTL2 contains 1 FCS-type zinc finger and 4 MBT repeats. It is putative Polycomb group (PcG) protein. PcG proteins maintain the transcriptionally repressive state of genes, probably via a modification of chromatin, rendering it heritably changed in its expressibility. Its association with a chromatin remodeling complex suggests that it may contribute to prevent expression of genes that trigger the cell into mitosis.
Synonyms:	H-l(3)mbt-l; L3MBT

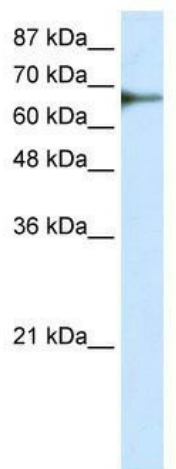


[View online »](#)

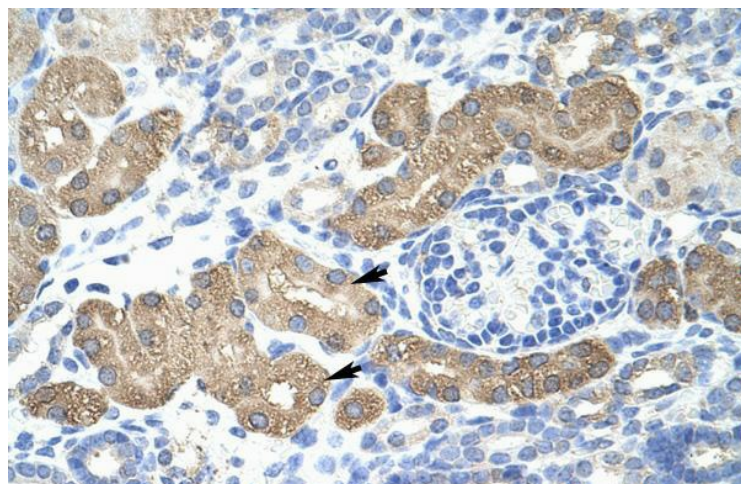
Note: Immunogen sequence homology: Dog: 100%; Pig: 100%; Horse: 100%; Human: 100%; Bovine: 100%; Rabbit: 100%; Guinea pig: 100%; Rat: 86%; Mouse: 80%

Protein Families: Transcription Factors

Product images:



WB Suggested Anti-L3MBTL2 Antibody Titration:
0.625ug/ml; ELISA Titer: 1:312500; Positive
Control: Transfected 293T



Rabbit Anti-L3MBTL2 Antibody; Paraffin
Embedded Tissue: Human Kidney; Cellular Data:
Epithelial cells of renal tubule; Antibody
Concentration: 4.0-8.0 ug/ml; Magnification: 400X