

## Product datasheet for **TA329102**

### MIXL1 Rabbit Polyclonal Antibody

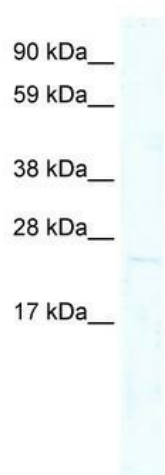
#### Product data:

Product Type:	Primary Antibodies
Applications:	WB
Recommended Dilution:	WB
Reactivity:	Human
Host:	Rabbit
Isotype:	IgG
Clonality:	Polyclonal
Immunogen:	The immunogen for anti-MIXL1 antibody: synthetic peptide directed towards the N terminal of human MIXL1. Synthetic peptide located within the following region: MATAESRALQFAEGAAFPAYRAPHAGGALLPPSPAAALLPAPPAGPGPA
Formulation:	Liquid. Purified antibody supplied in 1x PBS buffer with 0.09% (w/v) sodium azide and 2% sucrose. <i>Note that this product is shipped as lyophilized powder to China customers.</i>
Conjugation:	Unconjugated
Storage:	Store at -20°C as received.
Stability:	Stable for 12 months from date of receipt.
Predicted Protein Size:	25 kDa
Gene Name:	Mix paired-like homeobox
Database Link:	<a href="#">NP 114150</a> <a href="#">Entrez Gene 83881 Human</a> <a href="#">Q9H2W2</a>
Background:	MIXL1 is a novel human Mix-like homeobox gene. In normal hematopoiesis, its expression appears to be restricted to immature B- and T-lymphoid cells.
Synonyms:	MILD1; MIX; MIXL
Note:	Immunogen sequence homology: Human: 100%
Protein Families:	ES Cell Differentiation/IPS



[View online »](#)

**Product images:**



WB Suggested Anti-MIXL1 Antibody Titration: 0.2-1 ug/ml; ELISA Titer: 1:312500; Positive Control: Human heart