

Product datasheet for **TA329101**

EEA1 Rabbit Polyclonal Antibody

Product data:

Product Type:	Primary Antibodies
Applications:	IHC, IP, WB
Recommended Dilution:	WB, IP
Reactivity:	Human, Rat
Host:	Rabbit
Isotype:	IgG
Clonality:	Polyclonal
Immunogen:	The immunogen for anti-EEA1 antibody: synthetic peptide directed towards the N terminal of human EEA1. Synthetic peptide located within the following region: LTENLLKKEQDYTKLEEKHNEESVSKKNIQATLHQKDLDCQQLQSRLSAS
Formulation:	Liquid. Purified antibody supplied in 1x PBS buffer with 0.09% (w/v) sodium azide and 2% sucrose. <i>Note that this product is shipped as lyophilized powder to China customers.</i>
Conjugation:	Unconjugated
Storage:	Store at -20°C as received.
Stability:	Stable for 12 months from date of receipt.
Predicted Protein Size:	162 kDa
Gene Name:	early endosome antigen 1
Database Link:	NP_003557 Entrez Gene 314764 Rat Entrez Gene 8411 Human Q15075
Background:	EEA1 is involved in neuronal synaptic vesicle function and axonal transport and growth. EEA1 may undergo calcium-dependent conformational changes that are required for binding to SNAP-25.
Synonyms:	MST105; MSTP105; ZFYVE2
Note:	Immunogen sequence homology: Human: 100%; Pig: 92%; Rat: 92%; Horse: 92%; Mouse: 92%; Bovine: 92%; Guinea pig: 92%; Rabbit: 85%; Dog: 75%
Protein Pathways:	Endocytosis

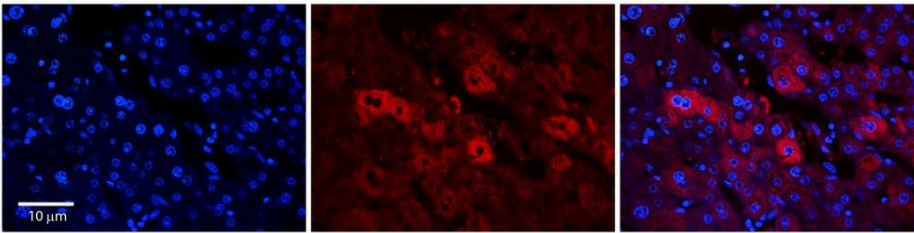


[View online »](#)

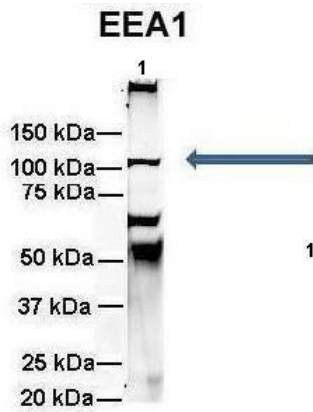
Product images:



WB Suggested Anti-EEA1 Antibody Titration: 0.06ug/ml; ELISA Titer: 1:312500; Positive Control: Human Placenta



Rabbit Anti-EEA1 Antibody; Formalin Fixed Paraffin Embedded Tissue: Human Adult Liver; Observed Staining: Cytoplasm in hepatocytes, moderate signal, moderate tissue distribution; Primary Antibody Concentration: 1:100; Secondary Antibody: Donkey anti-Rabbit-Cy3; Secondary Antibody Concentration: 1:200; Magnification: 20X; Exposure Time: 0.5–2.0 sec; Protocol located in Reviews and Data.



Amount and Sample Type : 500 ug rat brain homogenate; Amount of IP Antibody : 6 ug; Primary Antibody : EEA1; Primary Antibody Dilution : 1:500; Secondary Antibody : Goat anti-rabbit Alexa-Fluor 594; Secondary Antibody Dilution : 1:5000; Gene Name : EEA1; Submitted by : Dr. Yuzhi Chen, University of Arkansas for Medical Science

See Other Application 1 Data and Customer Feedback for more information