

Product datasheet for **TA329100**

ZNF394 Rabbit Polyclonal Antibody

Product data:

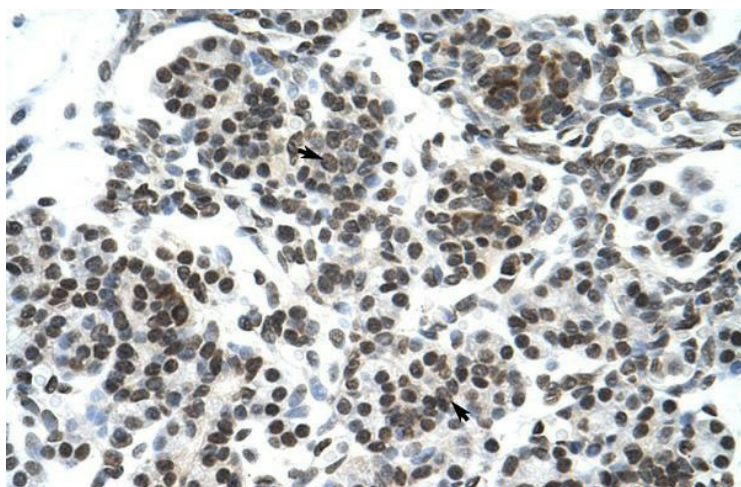
Product Type:	Primary Antibodies
Applications:	IHC, WB
Recommended Dilution:	WB, IHC
Reactivity:	Human
Host:	Rabbit
Isotype:	IgG
Clonality:	Polyclonal
Immunogen:	The immunogen for anti-ZNF394 antibody: synthetic peptide directed towards the N terminal of human ZNF394. Synthetic peptide located within the following region: GPWVMAARSKDAAPSQRDGLLPVKVEEDSPGSWEPNYPAASDPETSRLH
Formulation:	Liquid. Purified antibody supplied in 1x PBS buffer with 0.09% (w/v) sodium azide and 2% sucrose.
Conjugation:	Unconjugated
Storage:	Store at -20°C as received.
Stability:	Stable for 12 months from date of receipt.
Predicted Protein Size:	64 kDa
Gene Name:	zinc finger protein 394
Database Link:	NP_115540 Entrez Gene 84124 Human Q53GI3
Background:	ZNF394 belongs to the krueppel C2H2-type zinc-finger protein family and may be involved in transcriptional regulation.
Synonyms:	ZKSCAN14; ZSCAN46
Note:	Immunogen sequence homology: Human: 100%; Horse: 79%
Protein Families:	Transcription Factors



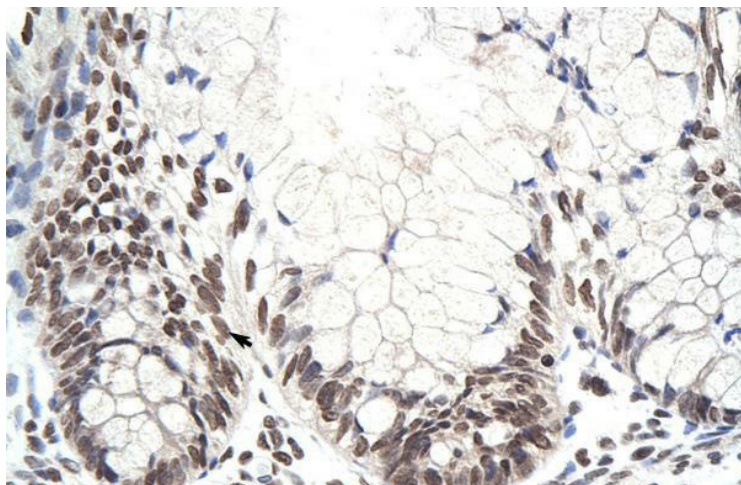
[View online »](#)

Product images:

WB Suggested Anti-ZNF394 Antibody Titration:
0.2-1 ug/ml; ELISA Titer: 1:312500; Positive
Control: Transfected 293T



Rabbit Anti-ZNF394 Antibody; Paraffin Embedded
Tissue: Human Pancreas; Cellular Data: Epithelial
cells of pancreatic acinus; Antibody
Concentration: 4.0-8.0 ug/ml; Magnification: 400X



Rabbit Anti-ZNF394 Antibody; Paraffin Embedded Tissue: Human Intestine; Cellular Data: Epithelial cells of intestinal villas; Antibody Concentration: 4.0-8.0 ug/ml; Magnification: 400X