

Product datasheet for **TA329087**

alpha 1 Fetoprotein (AFP) Goat Polyclonal Antibody

Product data:

Product Type:	Primary Antibodies
Applications:	WB
Recommended Dilution:	WB: 0.3-1ug/ml, ELISA: 1:128,000
Reactivity:	Human
Host:	Goat
Isotype:	IgG
Clonality:	Polyclonal
Immunogen:	Internal region (KDALTAIEKPTGDEQ)
Formulation:	Supplied at 0.5 mg/ml in Tris saline, 0.02% sodium azide, pH7.3 with 0.5% bovine serum albumin. Aliquot and store at -20°C. Minimize freezing and thawing.
Concentration:	lot specific
Purification:	Purified from goat serum by ammonium sulphate precipitation followed by antigen affinity chromatography using the immunizing peptide.
Conjugation:	Unconjugated
Storage:	Store at -20°C as received.
Stability:	Stable for 12 months from date of receipt.
Gene Name:	alpha fetoprotein
Database Link:	NP_001125 Entrez Gene 174 Human P02771



[View online »](#)

Background:

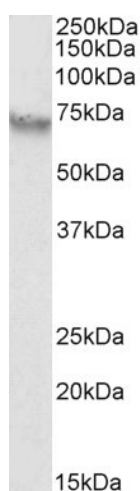
Alpha-fetoprotein (AFP) is a serum glycoprotein protein produced in the liver or yolk sac of fetal staged mammals. AFP synthesis is minimal after birth and trace amount is expressed in the adult liver (1). AFP gene expression is regulated by the interactions between steroid hormone receptors and transcriptional factors in separate signal transduction pathways (2). AFP functions as a binding and transporting ligand and cell growth regulator. Elevated expression level of AFP has been implicated in colorectal, ovarian, pancreatic, testicular, and certain liver cancers. High levels of AFP is also seen in some diseases such as hepatitis and colitis. AFP is used as a screening marker for fetal abnormalities in pregnant women such as Down syndrome. Recently, AFP has been introduced as an anti-cancer drugs-ligand carrier, transporting drugs to target tumor cells, increasing anti-tumor efficiency (3).

Synonyms:

AFPD; FETA; HPAFP

Protein Families:

Druggable Genome, Secreted Protein

Product images:

TA329087 (0.3ug/ml) staining of HepG2 lysate (35ug protein in RIPA buffer). Primary incubation was 1 hour. Detected by chemiluminescence.