

Product datasheet for **TA329086**

Atp5f1c Goat Polyclonal Antibody

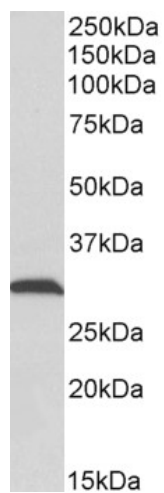
Product data:

Product Type:	Primary Antibodies
Applications:	WB
Recommended Dilution:	WB: 0.1-0.3ug/ml, ELISA: 1:128,000
Reactivity:	Rat (Expected from sequence similarity: Human, Mouse, Dog, Cow)
Host:	Goat
Isotype:	IgG
Clonality:	Polyclonal
Immunogen:	Internal region (near N terminus) (TLKDITRRLKSIKN)
Formulation:	Supplied at 0.5 mg/ml in Tris saline, 0.02% sodium azide, pH7.3 with 0.5% bovine serum albumin. Aliquot and store at -20°C. Minimize freezing and thawing.
Concentration:	lot specific
Purification:	Purified from goat serum by ammonium sulphate precipitation followed by antigen affinity chromatography using the immunizing peptide.
Conjugation:	Unconjugated
Storage:	Store at -20°C as received.
Stability:	Stable for 12 months from date of receipt.
Gene Name:	ATP synthase, H ⁺ transporting, mitochondrial F1 complex, gamma polypeptide 1
Database Link:	NP_446277 Entrez Gene 509 Human Entrez Gene 11949 Mouse Entrez Gene 478009 Dog Entrez Gene 116550 Rat
Background:	plays a role in oxidative phosphorylation [RGD, Feb 2006].
Synonyms:	ATP5C; ATP5CL1



[View online »](#)

Product images:



TA329086 (0.1ug/ml) staining of Rat Skeletal Muscle lysate (35ug protein in RIPA buffer). Primary incubation was 1 hour. Detected by chemiluminescence.