

## Product datasheet for **TA329085**

### alpha Actinin (ACTN1) Goat Polyclonal Antibody

#### Product data:

Product Type:	Primary Antibodies
Applications:	WB
Recommended Dilution:	WB: 0.3-1ug/ml, ELISA: 1:128,000
Reactivity:	Human, Mouse, Rat (Expected from sequence similarity: Dog, Pig, Cow)
Host:	Goat
Isotype:	IgG
Clonality:	Polyclonal
Immunogen:	Internal region (TPQEINGKWDHVRQ)
Formulation:	Supplied at 0.5 mg/ml in Tris saline, 0.02% sodium azide, pH7.3 with 0.5% bovine serum albumin. Aliquot and store at -20°C. Minimize freezing and thawing.
Concentration:	lot specific
Purification:	Purified from goat serum by ammonium sulphate precipitation followed by antigen affinity chromatography using the immunizing peptide.
Conjugation:	Unconjugated
Storage:	Store at -20°C as received.
Stability:	Stable for 12 months from date of receipt.
Gene Name:	actinin alpha 1
Database Link:	<a href="#">NP_001093</a> <a href="#">Entrez Gene 81634 Rat</a> <a href="#">Entrez Gene 109711 Mouse</a> <a href="#">Entrez Gene 480369 Dog</a> <a href="#">Entrez Gene 87 Human P12814</a>



[View online »](#)

**Background:**

Alpha-actinin is a ubiquitously expressed protein found in numerous actin structures. It consists of an N-terminal actin binding domain, a central rod domain, and a C-terminal domain and functions as a homodimer to cross-link actin filaments. The rod domain determines the distance between cross-linked actin filaments and also serves as an interaction site for several cytoskeletal and signaling proteins (1). Alpha-actinins are a multigene family of four actin-binding proteins related to dystrophin. Alpha-actinin-1 and -4 (ACTN1, ACTN4) are non-muscle isoforms version of ACTN. These isoform are commonly expressed in filopodia, lamellipodia, stress fibers, sites of adhesion and intercellular contacts (2).

**Synonyms:**

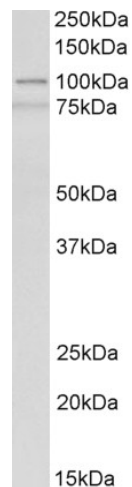
BDPLT15

**Protein Families:**

Druggable Genome, ES Cell Differentiation/IPS

**Protein Pathways:**

Adherens junction, Arrhythmogenic right ventricular cardiomyopathy (ARVC), Focal adhesion, Leukocyte transendothelial migration, Regulation of actin cytoskeleton, Systemic lupus erythematosus, Tight junction

**Product images:**

TA329085 (0.3ug/ml) staining of Human Spleen lysate (35ug protein in RIPA buffer). Primary incubation was 1 hour. Detected by chemiluminescence.



TA329085 (0.3ug/ml) staining of Mouse (A) and Rat (B) Spleen lysates (35ug protein in RIPA buffer). Primary incubation was 1 hour. Detected by chemiluminescence.