

## Product datasheet for **TA329084**

### Lactate Dehydrogenase B (LDHB) Goat Polyclonal Antibody

#### Product data:

Product Type:	Primary Antibodies
Applications:	WB
Recommended Dilution:	WB: 0.03-0.1 µg/ml.
Reactivity:	Human, Mouse, Rat, Pig (Expected from sequence similarity: Dog, Cow)
Host:	Goat
Isotype:	IgG
Clonality:	Polyclonal
Immunogen:	Internal region (near C terminus) (NARGLTSVINQKLK)
Formulation:	Supplied at 0.5 mg/ml in Tris saline, 0.02% sodium azide, pH7.3 with 0.5% bovine serum albumin. Aliquot and store at -20°C. Minimize freezing and thawing.
Concentration:	lot specific
Purification:	Purified from goat serum by ammonium sulphate precipitation followed by antigen affinity chromatography using the immunizing peptide.
Conjugation:	Unconjugated
Storage:	Store at -20°C as received.
Stability:	Stable for 12 months from date of receipt.
Gene Name:	lactate dehydrogenase B
Database Link:	<a href="#">NP_002291</a> <a href="#">Entrez Gene 16832 Mouse</a> <a href="#">Entrez Gene 24534 Rat</a> <a href="#">Entrez Gene 477675 Dog</a> <a href="#">Entrez Gene 3945 Human</a> <a href="#">P07195</a>



[View online »](#)

**Background:**

Lactate dehydrogenase (LDH) is an ubiquitous enzyme commonly found in wide variety of organisms, including plants and microbes. LDH is involved in the interconversion of the pyruvate and NADH to lactate and NAD<sup>+</sup>. It is also called Hydroxybutyrate Dehydrogenase (HBD), because it can catalyze the oxidation of hydroxybutyrate (1). In mammals, three types of LDH subunits (35 kDa) are encoded by the genes Ldh-A, Ldh-B, and Ldh-C. All LDH subunits can combine to form various tetrameric isoenzymes (140 kDa). Lactate dehydrogenase B (LDH-B, heart subunit, LDH-H) is involved in the conversion of L-lactate and NAD to pyruvate and NADH and it is predominantly localized in the heart tissue. Similar to other LDH subunit, LDH-B is considered to be an important marker for germ cell tumor (2).

**Synonyms:**

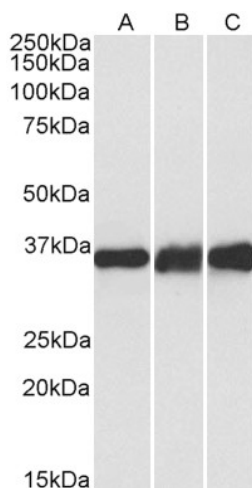
HEL-S-281; LDH-B; LDH-H; LDHBD; TRG-5

**Protein Families:**

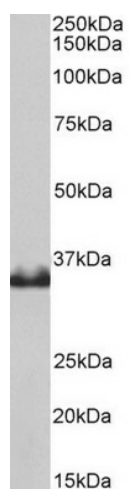
Druggable Genome

**Protein Pathways:**

Cysteine and methionine metabolism, Glycolysis / Gluconeogenesis, Metabolic pathways, Propanoate metabolism, Pyruvate metabolism

**Product images:**

TA329084 (0.1 ug/ml) staining of Human (A), Mouse (B) and Rat (C) Heart lysates (35 ug protein in RIPA buffer). Primary incubation was 1 hour. Detected by chemiluminescence.



TA329084 (0.1 ug/ml) staining of Pig Heart lysates (35 ug protein in RIPA buffer). Primary incubation was 1 hour. Detected by chemiluminescence.