

## Product datasheet for **TA329048**

### Sstr1 Rabbit Polyclonal Antibody

#### Product data:

Product Type:	Primary Antibodies
Applications:	WB
Recommended Dilution:	WB: 1:200-1:2000
Reactivity:	Rat
Host:	Rabbit
Clonality:	Polyclonal
Immunogen:	Peptide CSRPGSGAADGMEE, corresponding to amino acid residues 26-40 of rat somatostatin receptor type 1 (Accession# P28646). Extracellular, N-terminus.
Formulation:	Lyophilized. Concentration before lyophilization ~0.8mg/ml (lot dependent, please refer to CoA along with shipment for actual concentration). Buffer before lyophilization: Phosphate buffered saline (PBS), pH 7.4, 1% BSA, 0.05% NaN <sub>3</sub> .
Reconstitution Method:	Add 50 ul double distilled water (DDW) to the lyophilized powder.
Purification:	Affinity purified on immobilized antigen.
Conjugation:	Unconjugated
Storage:	Store at -20°C as received.
Stability:	Stable for 12 months from date of receipt.
Gene Name:	somatostatin receptor 1
Database Link:	<a href="#">NP_036851</a> <a href="#">Entrez Gene 25033 Rat P28646</a>



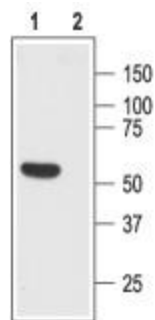
[View online »](#)

**Background:**

Somatostatin is a small cyclic peptide that is widely expressed throughout the central nervous system and peripheral tissues. In peripheral tissues, somatostatin exerts inhibitory effects on secretion processes, whereas in the brain it acts as a neurotransmitter in both stimulatory and inhibitory manner. Somatostatin mediates its action via six high affinity G-protein coupled receptors (SSTR1, SSTR2a, SSTR2b, SSTR3, SSTR4 and SSTR5) which are encoded by five genes. Expression of the different receptors is developmentally regulated in a time and tissue-specific manner. Somatostatin receptors have been found on a variety of neuroendocrine tumors, such as paragangliomas, carcinoids and breast tumors. Synthetic peptide derivatives of somatostatin have been successfully used in the treatment of neuroendocrine malignancies and in in vivo imaging of tumors that are positive to somatostatin receptors.

**Synonyms:**

SRIF-2; SS1R

**Product images:**

Western blot analysis of rat brain lysate: 1. Anti-Somatostatin Receptor Type 1 (extracellular) antibody, (1:200). 2. Anti-Somatostatin Receptor Type 1 (extracellular) antibody, preincubated with the control peptide antigen.