

Product datasheet for **TA329013**

Slc9a3r1 Rabbit Polyclonal Antibody

Product data:

Product Type:	Primary Antibodies
Applications:	WB
Recommended Dilution:	WB: 1:200-1:2000
Reactivity:	Rat
Host:	Rabbit
Clonality:	Polyclonal
Immunogen:	Peptide (C)IQKENSREALVEPA, corresponding to residues 261-274 of rat NHERF-1. Between the PDZ2 and the ERM binding domains.
Formulation:	Lyophilized. Concentration before lyophilization ~0.8mg/ml (lot dependent, please refer to CoA along with shipment for actual concentration). Buffer before lyophilization: Phosphate buffered saline (PBS), pH 7.4, 1% BSA, 5% sucrose, 0.05% NaN ₃ .
Reconstitution Method:	Add 50 ul double distilled water (DDW) to the lyophilized powder.
Purification:	Affinity purified on immobilized peptide.
Conjugation:	Unconjugated
Storage:	Store at -20°C as received.
Stability:	Stable for 12 months from date of receipt.
Gene Name:	SLC9A3 regulator 1
Database Link:	NP_067605 Entrez Gene 59114 Rat Q9JJ19



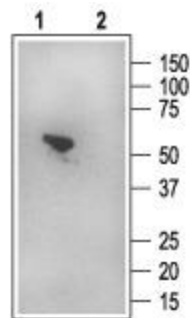
[View online »](#)

Background:

The Na⁺/H⁺ exchanger regulatory factor (EBP-50 or NHERF-1) is a 55 kD cytoplasmic protein adaptor that recruits a wide variety of cellular proteins. Many of the interacting proteins do so through the two tandem PDZ domains (protein-binding domains conserved in the mammalian synaptic protein PSD-95/DlgA/ZO-1) and the C-terminal ERM (ezrin, radixin, moesin) binding region. NHERF-1 was first identified as an adaptor necessary for the function of the Na⁺/H⁺ exchanger isoform 3(NHE3) in renal apical cells. Since then it has been identified in cells of epithelial origin in several tissues such as gastrointestinal and lung. NHERF-1 has been shown to interact with a growing number of proteins including ion channels (ROMK, CFTR, P2Y1, TRPC4 and TRPC6), growth factor receptors (PDGFR), phospholipase C isoforms (PLCb1, PLCb2, PLCb3), non-receptor protein tyrosine kinases (YAP65) and several cytoskeletal proteins that link membrane proteins to the underlying actin cytoskeleton. Recently it has been showed that NHERF-1 expression was elevated in breast tumors compared to the expression in adjacent normal tissue.

Synonyms:

EBP50; NHERF; NHERF-1; NHERF1; NPHLOP2

Product images:

Western blotting of rat kidney membranes: 1. Anti-NHERF-1 antibody (APZ-006), (1:200). 2. Anti NHERF-1 antibody, preincubated with the control peptide antigen.