

Product datasheet for **TA329000**

P2ry6 Rabbit Polyclonal Antibody

Product data:

Product Type:	Primary Antibodies
Applications:	WB
Recommended Dilution:	WB: 1:200-1:2000; IHC: 1:100-1:3,000; FC: 1:50-1:600
Reactivity:	Human, Mouse, Rat
Host:	Rabbit
Clonality:	Polyclonal
Immunogen:	Peptide CQPHDLLQKLTAKWQRQRV, corresponding to amino acid residues 311-328 of rat P2Y6 receptor. Intracellular, C-terminus.
Formulation:	Lyophilized. Concentration before lyophilization ~0.8mg/ml (lot dependent, please refer to CoA along with shipment for actual concentration). Buffer before lyophilization: Phosphate buffered saline (PBS), pH 7.4, 1% BSA, 0.05% NaN ₃ .
Reconstitution Method:	Add 50 ul double distilled water (DDW) to the lyophilized powder.
Purification:	Affinity purified on immobilized antigen.
Conjugation:	Unconjugated
Storage:	Store at -20°C as received.
Stability:	Stable for 12 months from date of receipt.
Gene Name:	pyrimidinergic receptor P2Y6
Database Link:	NP_476465 Entrez Gene 5031 Human Entrez Gene 233571 Mouse Entrez Gene 117264 Rat Q63371



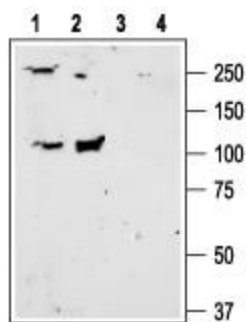
[View online »](#)

Background:

The nucleotide receptor P2Y6 binds UDP, and is a member of the G-protein coupled receptor superfamily. P2Y6 agonists induce an inositol phosphate/Ca²⁺ response that is insensitive to pertussis toxin inhibition. P2Y6 is coupled to phospholipase C via G_q, and is also coupled to inhibition of N-type Ca²⁺ and M-type K⁺ channels. P2Y6 mRNA is expressed in various rat tissues, including lung, stomach, intestine, spleen, heart, and aorta. P2Y6 was reported to mediate contractions in human cerebral arteries. Alomone Labs is please to offer a highly specific antibody directed against the C-terminus domain of the rat P2Y6 receptor. Anti-P2Y6 Receptor antibody can be used in western blot analysis, indirect flow cytometry, immunoprecipitation, immunocytochemistry and immunohistochemistry. It has been designed to recognize P2Y6 from rat, mouse and human samples.

Synonyms:

MGC15335; P2Y6

Product images:

Western blot analysis of rat brain (lanes 1, 3) and rat heart (lanes 2, 4) lysates: 1, 2. Anti-P2Y6 Receptor antibody, (1:200). 3, 4. Anti-P2Y6 Receptor antibody, preincubated with the control peptide antigen.