

## Product datasheet for **TA328998**

### P2ry1 Rabbit Polyclonal Antibody

#### Product data:

Product Type:	Primary Antibodies
Applications:	IHC, WB
Recommended Dilution:	WB: 1:200-1:2000; IHC: 1:100-1:3,000; FC: 1:50-1:600
Reactivity:	Human, Mouse, Rat
Host:	Rabbit
Clonality:	Polyclonal
Immunogen:	Peptide (C)RALI YKDLN NSPLR RKS, corresponding to residues 242-258 of rat or human P2Y1. 3rd intracellular loop (i3) between TM5 and TM6 domains.
Formulation:	Lyophilized. Concentration before lyophilization ~0.8mg/ml (lot dependent, please refer to CoA along with shipment for actual concentration). Buffer before lyophilization: phosphate buffered saline (PBS), pH 7.4, 1% BSA, 0.05% NaN <sub>3</sub> .
Reconstitution Method:	Add 50 ul double distilled water (DDW) to the lyophilized powder.
Purification:	Affinity purified on immobilized antigen.
Conjugation:	Unconjugated
Storage:	Store at -20°C as received.
Stability:	Stable for 12 months from date of receipt.
Gene Name:	purinergic receptor P2Y1
Database Link:	<a href="#">NP_036932</a> <a href="#">Entrez Gene 5028 Human</a> <a href="#">Entrez Gene 18441 Mouse</a> <a href="#">Entrez Gene 25265 Rat</a> <a href="#">P49651</a>

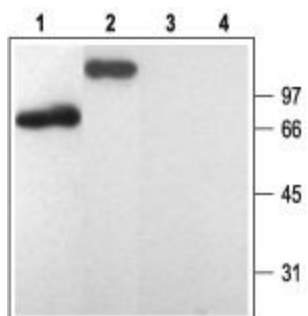
**Background:** The P2Y receptors belong to the G-protein coupled receptors superfamily. P2Y receptors mediate the actions of the extracellular nucleotides (ATP, ADP, UTP and UDP) and regulate several physiologic responses, among them, cardiac function, platelet aggregation and SMC proliferation. The mammalian P2Y family currently includes eight functional receptors; P2Y1, P2Y2, P2Y4, P2Y6, P2Y11, P2Y12, P2Y13, and the UDP-glucose receptor, now renamed P2Y14. P2Y1 receptor is abundantly expressed in a number of tissues. In platelets, P2Y1 receptor is co-expressed with P2Y12 receptor, responsible for the initial shape change, aggregation, and rise in intracellular Ca<sup>2+</sup> upon activation in response to ADP.



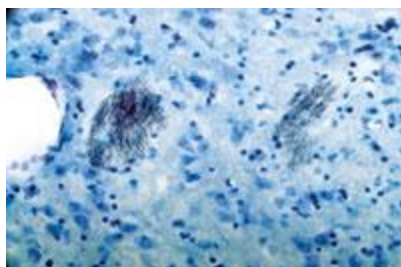
[View online »](#)

Synonyms: P2Y1

### Product images:



Western blot analysis of rat brain membranes (1, 3) and human platelets lysate (2, 4): 1, 2. Anti-P2Y1 Receptor antibody, (1:200). 3, 4. Anti-P2Y1 Receptor antibody, preincubated with the control peptide antigen.



Expression of P2Y1 in rat thalamus. Immunohistochemical staining of Fasciculi in rat thalamus using Anti-P2Y1 Receptor antibody. Specific staining is black. Cresyl violet is used as the counterstain.