

Product datasheet for **TA328997**

P2rx7 Rabbit Polyclonal Antibody

Product data:

Product Type:	Primary Antibodies
Applications:	IHC, WB
Recommended Dilution:	WB: 1:200-1:2000; IHC: 1:100-1:3,000; FC: 1:50-1:600
Reactivity:	Human, Mouse, Rat
Host:	Rabbit
Clonality:	Polyclonal
Immunogen:	Peptide KKGWMDPQSKGIQTGRC, corresponding to amino acid residues 136-152 of mouse P2X7 Receptor. Extracellular loop.
Formulation:	Lyophilized. Concentration before lyophilization ~0.8mg/ml (lot dependent, please refer to CoA along with shipment for actual concentration). Buffer before lyophilization: phosphate buffered saline (PBS), pH 7.4, 1% BSA, 0.05% NaN ₃ .
Reconstitution Method:	Add 50 ul double distilled water (DDW) to the lyophilized powder.
Purification:	Affinity purified on immobilized antigen.
Conjugation:	Unconjugated
Storage:	Store at -20°C as received.
Stability:	Stable for 12 months from date of receipt.
Gene Name:	purinergic receptor P2X, ligand-gated ion channel, 7
Database Link:	NP_035157 Entrez Gene 5027 Human Entrez Gene 29665 Rat Entrez Gene 18439 Mouse Q9Z1M0



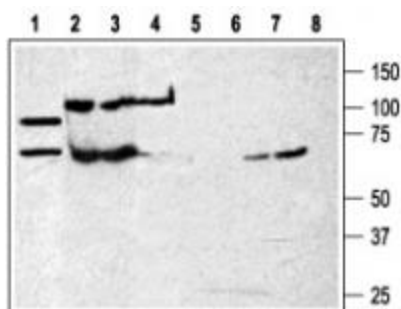
[View online »](#)

Background:

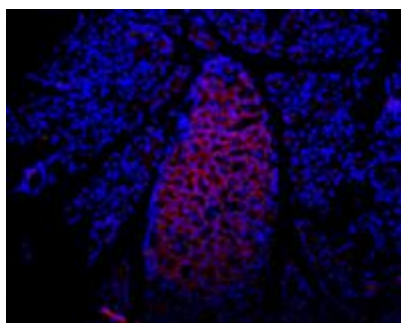
The P2X7 receptor is a member of the ionotropic P2X receptor family that is activated by ATP. To date, this family is composed of seven cloned receptor subtypes, named P2X1-P2X7. The different P2X receptors show distinct expression patterns. P2X1-6 have been found in the central and peripheral nervous system, while the P2X7 receptor is found in cells of the immune system, particularly antigen presenting cells, and microglia. The P2X7 receptor mediates the release of proinflammatory cytokines, stimulation of transcription factors and may also have an important role in apoptosis. Different techniques have been used to characterize the P2X7 receptor. Most of them investigated pores, ion channels (electrophysiology) and membrane alterations (calcium microfluorometry, dye uptake, membrane depolarization and ion influx analysis). With the introduction of flow cytometry, it is now possible to analyze multiple cell parameters such as cell cycle, cell membrane alteration, calcium influx and cell phenotype.

Synonyms:

MGC20089; P2X7

Product images:

Western blot analysis of rat brain membranes (lanes 1, 5) and human cell lines; K562 (lanes 2 and 6); WEHI-231 (lanes 3 and 7) and HL-60 (lanes 4 and 8): 1-4. Anti-P2X7 Receptor (extracellular) antibody, (1:200). 5-8. Anti-P2X7 Receptor (extracellular) antibody, preincubated with the control peptide antigen.



Expression of P2X7 in rat pancreas. Immunohistochemical staining of rat pancreas frozen section using Anti-P2X7 Receptor (extracellular) antibody, (1:100), followed by mouse anti-rabbit-AlexaFluor-594 secondary antibody (red). Staining is present in endocrine cells of the Isle of Langerhans. Hoechst 33342 is used as the counterstain.