

## Product datasheet for TA328994

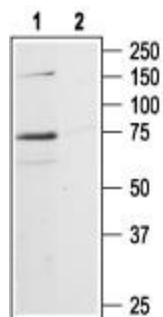
### P2rx7 Rabbit Polyclonal Antibody

#### Product data:

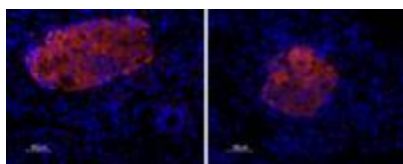
Product Type:	Primary Antibodies
Applications:	IHC, WB
Recommended Dilution:	WB: 1:200-1:2000; IHC: 1:100-1:3000
Reactivity:	Human, Mouse, Rat
Host:	Rabbit
Clonality:	Polyclonal
Immunogen:	Peptide (C)KIRKEFPKTQGQYSGFKYPY, corresponding to amino acid residues 576-595 of rat P2X7 Receptor?. Intracellular, C-terminus.
Formulation:	Lyophilized. Concentration before lyophilization ~0.8mg/ml (lot dependent, please refer to CoA along with shipment for actual concentration). Buffer before lyophilization: phosphate buffered saline (PBS), pH 7.4, 1% BSA, 0.05% NaN <sub>3</sub> .
Reconstitution Method:	Add 50 ul double distilled water (DDW) to the lyophilized powder.
Purification:	Affinity purified on immobilized antigen.
Conjugation:	Unconjugated
Storage:	Store at -20°C as received.
Stability:	Stable for 12 months from date of receipt.
Gene Name:	purinergic receptor P2X 7
Database Link:	<a href="#">NP_062129</a> <a href="#">Entrez Gene 5027 Human</a> <a href="#">Entrez Gene 18439 Mouse</a> <a href="#">Entrez Gene 29665 Rat</a> <a href="#">Q64663</a>
Background:	The P2X7 receptor is a member of the ionotropic P2X receptor family that is activated by ATP. To date, this family is composed of seven receptor subtypes, named P2X1-P2X7, all of which have been cloned. The various P2X receptors show distinct expression patterns. P2X1-6 receptors have been found in the central and peripheral nervous system, while the P2X7 receptor is found in cells of the immune system, particularly in antigen-presenting cells, and microglia. The P2X7 receptor mediates the release of proinflammatory cytokines and stimulation of transcription factors and may also play an important role in apoptosis.
Synonyms:	MGC20089; P2X7


[View online »](#)

## Product images:



Western blot analysis of rat hippocampus lysates:  
1. Anti-P2X7 Receptor antibody, (1:200). 2. Anti-P2X7 Receptor antibody, preincubated with the control peptide antigen.



Expression of P2X7 Receptor in rat pancreas.  
Immunohistochemical staining of rat paraffin-embedded endocrine and exocrine pancreas sections using Anti-P2X7 Receptor antibody, (1:50), followed by goat anti-rabbit-AlexaFluor-555-secondary antibody (1:500), (red). Staining is highly specific for endocrine cells of the Islet of Langerhans. Hoechst 33342 is used as the counterstain (blue).