

Product datasheet for **TA328991**

P2rx1 Rabbit Polyclonal Antibody

Product data:

Product Type:	Primary Antibodies
Applications:	IHC, WB
Recommended Dilution:	WB: 1:200-1:2000; IHC: 1:100-1:3000
Reactivity:	Human, Mouse, Rat
Host:	Rabbit
Clonality:	Polyclonal
Immunogen:	Peptide (CS)DPVATSSTLGLQENMRTS, corresponding to amino acid residues 382-399 of rat P2X1 Receptor. Intracellular, C-terminus.
Formulation:	Lyophilized. Concentration before lyophilization ~0.8mg/ml (lot dependent, please refer to CoA along with shipment for actual concentration). Buffer before lyophilization: phosphate buffered saline (PBS), pH 7.4, 1% BSA, 0.05% NaN ₃ .
Reconstitution Method:	Add 50 ul double distilled water (DDW) to the lyophilized powder.
Purification:	Affinity purified on immobilized antigen.
Conjugation:	Unconjugated
Storage:	Store at -20°C as received.
Stability:	Stable for 12 months from date of receipt.
Gene Name:	purinergic receptor P2X 1
Database Link:	NP_037129 Entrez Gene 5023 Human Entrez Gene 18436 Mouse Entrez Gene 25505 Rat P47824



[View online »](#)

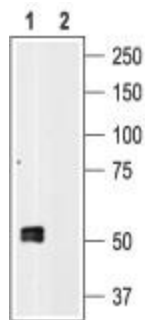
Background:

The P2X receptors belong to the ligand-gated ion channel family and are activated by extracellular ATP. The structure and function of the P2X receptors, investigated mainly using in vitro models, indicate their involvement in synaptic communication, cell death, and differentiation. Seven mammalian P2X receptor subtypes (P2X1-P2X7) have been identified and cloned. All P2X receptor subtypes share the same structure of intracellular N and C-termini two membrane-spanning domains and a large extracellular loop. All P2X receptor subtypes can assemble to form homomeric or heteromeric functional channels with the exception of P2X6, which only seems to function as part of a heteromeric complex. The various P2X receptor subtypes show distinct expression patterns. P2X1-6 have been found in the central and peripheral nervous system, while the P2X7 receptor is predominantly found in cells of the immune system. The P2X1 receptor is present in smooth muscle, cerebellum, dorsal horn spinal neurons, and platelets where it is suggested to play a regulatory role during in vivo homeostasis and thrombosis.

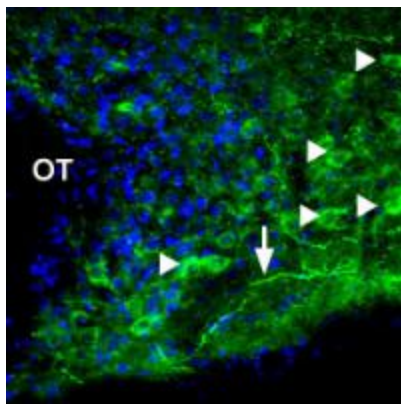
Synonyms:

P2X1

Product images:



Western blot analysis of human platelet lysates: 1. Anti-P2X1 Receptor antibody, (1:200). 2. Anti-P2X1 Receptor antibody, preincubated with the control peptide antigen.



Expression of P2X1 Receptor in rat hypothalamus. Immunohistochemical staining of rat supra-optic nucleus using Anti-P2X1 Receptor antibody. P2X1 Receptor (green) appears in axonal processes (vertical arrows) and cell bodies (horizontal arrows). DAPI is used as the counterstain (blue).