

Product datasheet for **TA328952**

Kcnh5 Rabbit Polyclonal Antibody

Product data:

Product Type:	Primary Antibodies
Applications:	WB
Recommended Dilution:	WB: 1:200-1:2000; IHC: 1:100-1:3000
Reactivity:	Human, Rat
Host:	Rabbit
Clonality:	Polyclonal
Immunogen:	Peptide (C)EDPKGSDSENSVTKNPLRK,?Å corresponding to amino acid residues 842-860 of rat Kv10.2?Å . Intracellular, C-terminus.
Formulation:	Lyophilized. Concentration before lyophilization ~0.8mg/ml (lot dependent, please refer to CoA along with shipment for actual concentration). Buffer before lyophilization: Phosphate buffered saline (PBS), pH 7.4, 1% BSA, 5% sucrose, 0.05% NaN3.
Reconstitution Method:	Add 50 ul double distilled water (DDW) to the lyophilized powder.
Purification:	Affinity purified on immobilized peptide.
Conjugation:	Unconjugated
Storage:	Store at -20°C as received.
Stability:	Stable for 12 months from date of receipt.
Gene Name:	potassium voltage-gated channel subfamily H member 5
Database Link:	NP_598294 Entrez Gene 27133 Human Entrez Gene 171146 Rat Q9EPI9

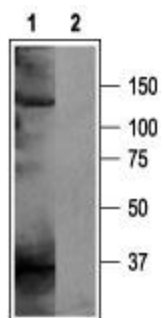
Background: KV10.2 is a member of the Ether-a-go-go family of voltage-activated potassium channels. The family includes today 8 members: the closely related KV10.1 protein, the KV12 (elk) (elk1, elk2, elk3) and the KV11 (erg) proteins (erg1, erg2, erg3). The eag subfamily current is characterized by outward rectification without inactivation and slow activation kinetics. No specific pharmacological blocker has been described. Tissue distribution of KV10.2 expression in rats is restricted to neuronal tissue with greater expression in the cortex and thalamus. In humans, KV10.2 mRNA was detected in heart and skeletal muscle in addition to brain. The physiological role of KV10.2 is unknown at the moment.



[View online »](#)

Synonyms: EAG2; H-EAG2; hEAG2; Kv10.2

Product images:



Western blot analysis of rat brain membranes: 1. Anti-Kv10.2 (EAG-2) antibody, (1:200). 2. Anti-Kv10.2 (EAG-2) antibody, preincubated with the control peptide antigen.