

## Product datasheet for **TA328946**

### Kcnj12 Rabbit Polyclonal Antibody

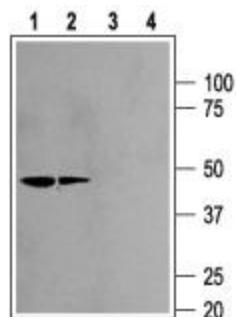
#### Product data:

Product Type:	Primary Antibodies
Applications:	WB
Recommended Dilution:	WB: 1:200-1:2000; FC: 1:50-1:600
Reactivity:	Rat
Host:	Rabbit
Clonality:	Polyclonal
Immunogen:	Peptide (C)EVATDRDGRSPQPEHDFDR $\hat{A}$ corresponding to amino acid residues 391-409 of rat Kir2.2 . Intracellular, C-terminal part.
Formulation:	Lyophilized. Concentration before lyophilization ~0.8mg/ml (lot dependent, please refer to CoA along with shipment for actual concentration). Buffer before lyophilization: Phosphate buffered saline (PBS) pH 7.4, 1% BSA, 0.025% NaN <sub>3</sub> .
Reconstitution Method:	Add 50 ul double distilled water (DDW) to the lyophilized powder.
Purification:	Affinity purified on immobilized antigen.
Conjugation:	Unconjugated
Storage:	Store at -20°C as received.
Stability:	Stable for 12 months from date of receipt.
Gene Name:	potassium voltage-gated channel subfamily J member 12
Database Link:	<a href="#">NP_446433</a> <a href="#">Entrez Gene 117052 Rat</a>
Background:	Kir2.2 is a member of the inward rectifying K <sup>+</sup> channel family. The Kir2 subfamily comprises 4 known members: Kir2.1, Kir2.2, Kir2.3 and Kir2.4. The Kir2 subfamily members are strong inward rectifiers and are believed to be involved in maintaining the resting membrane potential and buffering of extracellular K <sup>+</sup> . The Kir2.2 subunit is expressed in the CNS, kidney and heart where it was found to form heteromeric channels with Kir2.1.
Synonyms:	FLJ14167; hIRK; hIRK1; hkir2.2x; IRK2; kcnj12x; KCNJN1; Kir2.2; Kir2.2v



[View online »](#)

## Product images:



Western blot analysis of rat kidney (1, 3) and brain (2, 4) membranes: 1, 2. Anti-Kir2.2 antibody, (1:200). 3, 4. Anti-Kir2.2 antibody, preincubated with the control peptide antigen.