

Product datasheet for **TA328892**

Stx4 Rabbit Polyclonal Antibody

Product data:

Product Type:	Primary Antibodies
Applications:	IHC, WB
Recommended Dilution:	WB: 1:200-1:2000; IHC: 1:100-1:3000
Reactivity:	Rat
Host:	Rabbit
Clonality:	Polyclonal
Immunogen:	Peptide RDRTHELRQGDNISDDEDEVRV(C), corresponding to residues 2-23 of rat Syntaxin 4. Intracellular, N-terminus.
Formulation:	Lyophilized. Concentration before lyophilization ~0.8mg/ml (lot dependent, please refer to CoA along with shipment for actual concentration). Buffer before lyophilization: Phosphate buffered saline (PBS), pH 7.4, 1% BSA, 0.025% NaN ₃ .
Reconstitution Method:	Add 50 ul double distilled water (DDW) to the lyophilized powder.
Purification:	Affinity purified on immobilized antigen.
Conjugation:	Unconjugated
Storage:	Store at -20°C as received.
Stability:	Stable for 12 months from date of receipt.
Gene Name:	syntaxin 4
Database Link:	NP_112387 Entrez Gene 81803 Rat Q08850



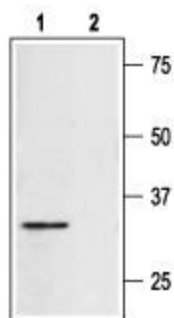
[View online »](#)

Background:

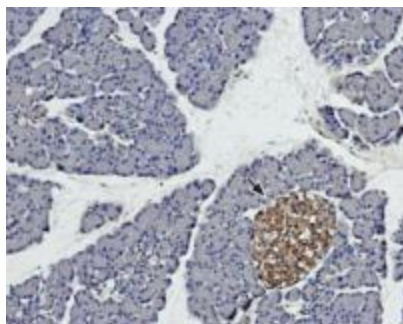
Syntaxin 4 is a member of the soluble N-ethylmaleimide-sensitive factor attachment protein receptor (SNARE) protein superfamily. The family includes 36 members in humans and is characterized by the SNARE motif, an evolutionarily conserved stretch of 60–70 amino acids that are arranged in heptad repeats. SNARE proteins are involved in exocytosis and intracellular vesicle trafficking and are essential for cell growth, hormone secretion and neurotransmission, processes that require rapid, targeted, and regulated membrane fusion. SNAREs can be roughly divided into vesicular (v-SNAREs) and target (t-SNAREs) based on their distribution on the transport vesicle or target membrane respectively. Thus, assembly of cognate v-/t-SNAREs between two opposing membranes generates trans-SNARE complexes, which bring the lipid bilayers in close proximity and drive membrane fusion. Syntaxin 4, like most SNAREs, is a type IV membrane protein with a relatively large N-terminus containing the SNARE motif located in the cytoplasmic side and a transmembrane domain located close to the C-terminus that functions as an anchor. Syntaxin 4 functions as a plasma membrane protein t-SNARE and has been shown to have an important role in pancreatic b-cell insulin secretion and in insulin-stimulated glucose uptake in skeletal muscle and adipose tissue by means of translocation of the glucose transporter GLUT4 from an intracellular compartment to the plasma membrane.

Synonyms:

p35-2; STX4A

Product images:

Western blot analysis of rat heart lysate: 1. Anti-Syntaxin 4 antibody, (1:400). 2. Anti-Syntaxin 4 antibody, preincubated with the control peptide antigen.



Expression of Syntaxin 4 in rat pancreas. Immunohistochemical staining of rat pancreas paraffin embedded sections using Anti-Syntaxin 4 antibody, (1:100). Syntaxin 4 (brown staining) is expressed in endocrine cells of the Isles of Langerhans (arrow). Hematoxylin is used as the counterstain.