

## Product datasheet for **TA328858**

### Slc6a11 Rabbit Polyclonal Antibody

#### Product data:

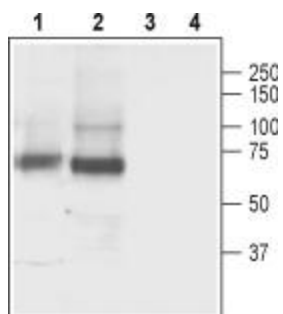
Product Type:	Primary Antibodies
Applications:	WB
Recommended Dilution:	WB: 1:200-1:2000
Reactivity:	Mouse, Rat
Host:	Rabbit
Clonality:	Polyclonal
Immunogen:	Peptide (C)REARDKAVHERGH, corresponding to amino acid residues 35- 47 of rat GABA Transporter 3. Intracellular, N-terminus.
Formulation:	Lyophilized. Concentration before lyophilization ~0.8mg/ml (lot dependent, please refer to CoA along with shipment for actual concentration). Buffer before lyophilization: Phosphate buffered saline (PBS), pH 7.4, 1% BSA, 0.05% NaN <sub>3</sub> .
Reconstitution Method:	Add 50 ul double distilled water (DDW) to the lyophilized powder.
Purification:	Affinity purified on immobilized antigen.
Conjugation:	Unconjugated
Storage:	Store at -20°C as received.
Stability:	Stable for 12 months from date of receipt.
Gene Name:	solute carrier family 6 member 11
Database Link:	<a href="#">NP_077348</a> <a href="#">Entrez Gene 243616 Mouse</a> <a href="#">Entrez Gene 79213 Rat</a> <a href="#">P31647</a>
Background:	Gamma-aminobutyric acid (GABA) is the major inhibitory neurotransmitter in the mammalian central nervous system. Transmission via GABA can be halted by its reuptake through GABA transporters (GATs). These membrane proteins belong to the super family of slc6 genes which encode transporters responsible for the uptake of dopamine, serotonin, norepinephrine, glycine and GABA in a Na <sup>+</sup> -dependent manner. To date, four GATs have been identified: GAT-1, GAT-2, GAT-3 and BGT-1. Like all members of the slc6 family, they have twelve transmembrane domains and short intracellular N- and C-termini. GATs couple the transport of one GABA molecule to two Na <sup>+</sup> ions and one Cl <sup>-</sup> ion. GAT-3 is highly expressed in the brain and is linked to epilepsy.



[View online »](#)

Synonyms: GABT3; GAT-3; GAT3

### Product images:



Western blot analysis of rat brain lysate (lanes 1 and 3) and mouse brain lysate (lanes 2 and 4): 1-2. Anti-GABA Transporter 3 (GAT-3) antibody, (1:500). 3-4. Anti-GABA Transporter 3 (GAT-3) antibody, preincubated with the control peptide antigen.