

Product datasheet for **TA328857**

Slc6a13 Rabbit Polyclonal Antibody

Product data:

Product Type:	Primary Antibodies
Applications:	IHC, WB
Recommended Dilution:	WB: 1:200-1:2000; IHC: 1:100-1:3000
Reactivity:	Mouse, Rat
Host:	Rabbit
Clonality:	Polyclonal
Immunogen:	Peptide (C)KVEEDGTLEREQWTNK, corresponding to amino acids residues 23-38 of rat GABA Transporter 2. Intracellular, N-terminus.
Formulation:	Lyophilized. Concentration before lyophilization ~0.8mg/ml (lot dependent, please refer to CoA along with shipment for actual concentration). Buffer before lyophilization: Phosphate buffered saline (PBS), pH 7.4, 1% BSA, 0.05% NaN ₃ .
Reconstitution Method:	Add 50 ul double distilled water (DDW) to the lyophilized powder.
Purification:	Affinity purified on immobilized antigen.
Conjugation:	Unconjugated
Storage:	Store at -20°C as received.
Stability:	Stable for 12 months from date of receipt.
Gene Name:	solute carrier family 6 member 13
Database Link:	NP_598307 Entrez Gene 14412 Mouse Entrez Gene 171163 Rat P31646



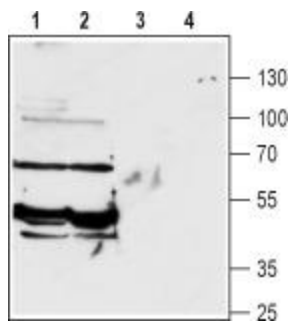
[View online »](#)

Background:

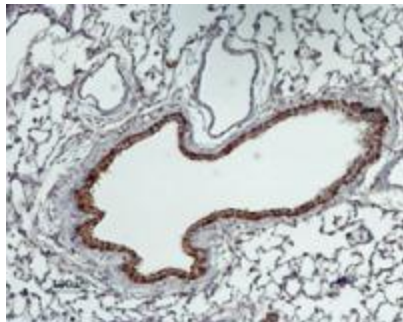
Gamma-aminobutyric acid (GABA) is the major inhibitory neurotransmitter in the mammalian central nervous system. Transmission via GABA can be halted by its reuptake through GABA transporters (GATs). These membrane proteins belong to the super family of slc6 genes which encode transporters responsible for the uptake of dopamine, serotonin, norepinephrine, glycine and GABA in a Na⁺-dependent manner. To date, four GATs have been identified: GAT-1, GAT-2, GAT-3 and BGT-1. Like all members of the slc6 family, they have twelve transmembrane domains and short intracellular N- and C-termini. GATs couple the transport of one GABA molecule to two Na⁺ ions and one Cl⁻ ion. GAT-2 is expressed in the brain and in the periphery and is also abundant in the kidney and liver. Due to its relatively broad expression pattern, suggested roles for GAT-2 include maturation of the nervous system, and regulation of GABA levels among others.

Synonyms:

GAT-2; GAT2

Product images:

Western blot analysis of rat (lanes 1 and 3) and mouse (lanes 2 and 4) brain lysates: 1, 2. Anti-GABA Transporter 2 (GAT-2) antibody, (1:200). 3, 4. Anti-GABA Transporter 2 (GAT-2) antibody, preincubated with the control peptide antigen.



Expression of GABA Transporter 2 (GAT-2) in rat lung. Immunohistochemical staining of rat lung paraffin-embedded sections using Anti-GABA Transporter 2 (GAT-2) antibody, (1:100). GAT-2 (brown) is expressed in the respiratory epithelium of the bronchioli. Hematoxylin is used as the counterstain.