

## Product datasheet for **TA328855**

### Ghsr Rabbit Polyclonal Antibody

#### Product data:

Product Type:	Primary Antibodies
Applications:	IF, WB
Recommended Dilution:	WB: 1:200-1:2000; FC: 1:50-1:600
Reactivity:	Human, Mouse, Rat
Host:	Rabbit
Clonality:	Polyclonal
Immunogen:	Peptide CRATEFAVRSG, corresponding to amino acid residues 197-207 of rat Ghrelin Receptor. 2nd extracellular loop.
Formulation:	Lyophilized. Concentration before lyophilization ~0.8mg/ml (lot dependent, please refer to CoA along with shipment for actual concentration). Buffer before lyophilization: Phosphate buffered saline (PBS), pH 7.4, 1% BSA, 0.05% NaN <sub>3</sub> .
Reconstitution Method:	Add 50 ul double distilled water (DDW) to the lyophilized powder.
Purification:	Affinity purified on immobilized antigen.
Conjugation:	Unconjugated
Storage:	Store at -20°C as received.
Stability:	Stable for 12 months from date of receipt.
Gene Name:	growth hormone secretagogue receptor
Database Link:	<a href="#">NP_114464</a> <a href="#">Entrez Gene 2693 Human</a> <a href="#">Entrez Gene 208188 Mouse</a> <a href="#">Entrez Gene 84022 Rat</a> <a href="#">O08725</a>



[View online »](#)

**Background:**

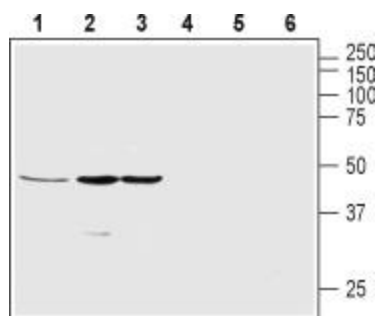
Ghrelin is a 28 amino acid peptide, acylated on a serine residue which is essential for its biological activity. In rodents, an additional form of the peptide could be purified. The peptide is released from the stomach and exerts its effect to ghrelin receptor (GHS-R). GHS-R is a member of the G-protein coupled receptor (GPCR) superfamily. Like all members, the receptor has seven transmembrane spanning domains and upon activation it stimulates phospholipase C, thereby increasing IP3 and intracellular Ca<sup>2+</sup> levels. GHS-R is expressed in the hypothalamus, pituitary and hippocampus. Some of the actions of ghrelin include the stimulation of growth hormone release, food intake, fat accumulation, regulation of memory and learning, activation of reward-related pathways and neuroprotection to name a few. GHS-R 1b is a truncated form of the full length receptor which is also expressed. Although its exact functions are unknown, it is believed that it may be involved in downregulating signaling from the full length receptor. In addition, it is overexpressed in lung cancer where it dimerizes with neurotensin receptor.

**Synonyms:**

GHRP; GHS-R; OTTHUMP00000211093

**Note:**

This antibody was tested in live cell imaging. Please see IF/ICC data for detail.

**Product images:**

Western blot analysis of rat pancreas (lanes 1 and 4), SH-SY5Y (lanes 2 and 5) and MS1 (lanes 3 and 6) lysates: 1-3. Anti-Ghrelin Receptor (extracellular) antibody, (1:200). 4-6. Anti-Ghrelin Receptor (extracellular) antibody, preincubated with the control peptide antigen.



Expression of Ghrelin Receptor in human SH-SY5Y cell line. Immunocytochemical staining of Ghrelin receptor in intact living human neuroblastoma (SH-SY5Y) cells. A. Extracellular staining of cells with Anti-Ghrelin Receptor (extracellular) antibody, (red), (1:50) followed by goat anti-rabbit-AlexaFluor-594 secondary antibody. B. DAPI is used as the counterstain (blue). C. Merged images of A and B.