

Product datasheet for **TA328853**

GlP2r Rabbit Polyclonal Antibody

Product data:

Product Type:	Primary Antibodies
Applications:	IHC, WB
Recommended Dilution:	WB: 1:200-1:2000; IHC: 1:100-1:3000
Reactivity:	Rat
Host:	Rabbit
Clonality:	Polyclonal
Immunogen:	Peptide (C)KRPDDESGWMSYLSE, corresponding to amino acid residues 241-255 of rat GLP2R. 1st extracellular loop.
Formulation:	Lyophilized. Concentration before lyophilization ~0.8mg/ml (lot dependent, please refer to CoA along with shipment for actual concentration). Buffer before lyophilization: Phosphate buffered saline (PBS), pH 7.4, 1% BSA, 0.05% NaN ₃ .
Reconstitution Method:	Add 50 ul double distilled water (DDW) to the lyophilized powder.
Purification:	Affinity purified on immobilized antigen.
Conjugation:	Unconjugated
Storage:	Store at -20°C as received.
Stability:	Stable for 12 months from date of receipt.
Gene Name:	glucagon-like peptide 2 receptor
Database Link:	NP_068620 Entrez Gene 60432 Rat Q9Z0W0



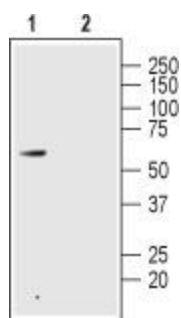
[View online »](#)

Background:

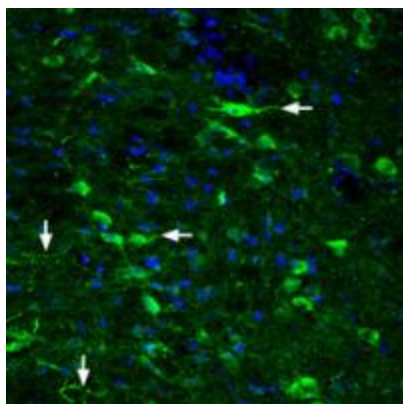
Glucagon like peptide-2 (GLP-2) is a 33 amino acid peptide secreted following food consumption. It is cleaved by dipeptidyl peptidase IV thereby yielding a very short half life. GLP-2 imposes most of its effect on intestinal epithelial cells where it is also be used as a therapeutic drug for gastrointestinal injuries. The many actions of GLP-2 include cellular proliferation of intestinal epithelial cells, the increase of amino acid and lipid absorption and increase of digestive enzyme activity of the epithelial brush border cells. The GLP-2 cellular and physiological effects are primarily exerted through the glucagon-like peptide-2 receptor (GLP-2R), a member of the G-protein coupled receptor superfamily. The receptor can couple either Gs or Gi G-proteins. However, when heterologously expressed, the receptor can stimulate the synthesis of cAMP. Expression of GLP-2R is strongly detected in the central nervous system and the gastrointestinal tract, although its expression in this area remains controversial as some species express the receptor in different regions than others. It is also slightly detected in the lungs, cervix and vagal afferents.

Synonyms:

GLP-2-R; GLP-2R

Product images:


Western blot analysis of rat colon lysate: 1. Anti-Glucagon-like Peptide 2 Receptor (extracellular) antibody, (1:200). 2. Anti-Glucagon-like Peptide 2 Receptor (extracellular) antibody, preincubated with the control peptide antigen.



Expression of Glucagon-like Peptide 2 Receptor in rat hypothalamus. Immunohistochemical staining of rat hypothalamus with Anti-Glucagon-like Peptide 2 Receptor (extracellular) antibody, (1:200). Glucagon-like peptide 2 receptor (green) appears in the lateral hypothalamic region axonal profiles (vertical white arrow) and nerve cell profiles (horizontal white arrows) were labeled. DAPI is used as the counterstain (blue).