

Product datasheet for **TA328848**

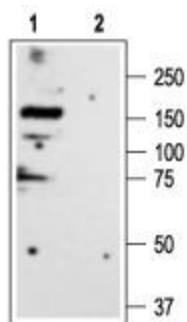
Glra3 Rabbit Polyclonal Antibody

Product data:

Product Type:	Primary Antibodies
Applications:	WB
Recommended Dilution:	WB: 1:200-1:2000
Reactivity:	Rat
Host:	Rabbit
Clonality:	Polyclonal
Immunogen:	Peptide (C)KKNKTEAFALEKFYR, corresponding to amino acid residues 355-368 of rat Glycine Receptor α 3. 2nd intracellular loop.
Formulation:	Lyophilized. Concentration before lyophilization ~0.8mg/ml (lot dependent, please refer to CoA along with shipment for actual concentration). Buffer before lyophilization: Phosphate buffered saline (PBS), pH 7.4, 1% BSA, 0.05% NaN ₃ .
Reconstitution Method:	Add 50 ul double distilled water (DDW) to the lyophilized powder.
Purification:	Affinity purified on immobilized antigen.
Conjugation:	Unconjugated
Storage:	Store at -20°C as received.
Stability:	Stable for 12 months from date of receipt.
Gene Name:	glycine receptor, alpha 3
Database Link:	NP_446176 Entrez Gene 114516 Rat
Background:	Glycine is a major neurotransmitter in the mammalian central nervous system. The glycine receptor is a ligand gated Cl ⁻ channel, mediating synaptic inhibition in the spinal cord, retina and regions of the brain. The glycine receptor is a pentamer consisting of α and β subunits. To date there are four known α -subunit isoforms (α 1- α 4) encoded by different genes. In humans, two alternative splice variants of the glycine receptor α 3 have been described: α 3L, and α 3K where the α 3L splice variant bears an additional segment of 15 amino acids within the long cytoplasmic TM3-4 loop. These variants differ in their desensitization kinetics.
Synonyms:	GLRA3



[View online »](#)

Product images:

Western blot analysis of rat brain membranes: 1. Anti-Glycine Receptor α 3 antibody, (1:200). 2. Anti-Glycine Receptor α 3 antibody, preincubated with the control peptide antigen.