

Product datasheet for **TA328794**

Cntfr Rabbit Polyclonal Antibody

Product data:

Product Type:	Primary Antibodies
Applications:	WB
Recommended Dilution:	WB: 1:200-1:2000
Reactivity:	Mouse, Rat
Host:	Rabbit
Clonality:	Polyclonal
Immunogen:	Peptide CHIRYMHLFSTIKYK, corresponding to amino acid residues 164-178 of rat CNTFRa . Extracellular.
Formulation:	Lyophilized. Concentration before lyophilization ~0.8mg/ml (lot dependent, please refer to CoA along with shipment for actual concentration). Buffer before lyophilization: Phosphate buffered saline (PBS), pH 7.4, 1% BSA, 0.05% NaN ₃ .
Reconstitution Method:	Add 50 ul double distilled water (DDW) to the lyophilized powder.
Purification:	Affinity purified on immobilized antigen.
Conjugation:	Unconjugated
Storage:	Store at -20°C as received.
Stability:	Stable for 12 months from date of receipt.
Gene Name:	ciliary neurotrophic factor receptor
Database Link:	NP_001003929 Entrez Gene 12804 Mouse Entrez Gene 313173 Rat Q08406

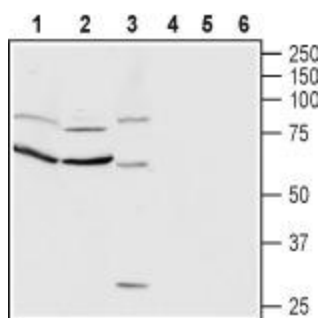
[View online »](#)

Background:

CNTF is a polypeptide trophic factor, member of the alpha-helical cytokine superfamily. It was initially purified from the chick eye on the basis of its ability to promote survival of E8 chick ciliary ganglion neurons in culture. CNTF is synthesized by glia both in the CNS and PNS³ and it has been demonstrated that CNTF is ubiquitously distributed in neurons and glia throughout the rodent brain. CNTF effects are mediated by a tripartite receptor complex consisting of two signal-transducing subunits (leukemia inhibitory factor receptor, gp130) and a CNTF-specific ligand-binding-subunit (CNTFRa). CNTFRa is anchored to the membrane by a glycosyl-phosphatidylinositol (GPI) linkage and lacks the intracellular signaling moiety. It can be cleaved from the GPI anchor to yield a soluble form of the receptor (sCNTFRa). CNTF binds to CNTFRa, the latter associates with gp130 which recruits LIFR. This leads to the activation of a signaling cascade involving the JAK/STAT pathway. CNTFRa knockout mice die within 24 hours after birth as opposed to CNTF knock animals which are viable. This strongly suggest that CNTFRa has other ligands besides CNTF. Indeed, CLC/CLF complex (cardiotrophin like cytokine/cytokine-like factor-1) binds CNTFRa and activates a similar signaling pathway to that of CNTF.

Synonyms:

MGC1774

Product images:


Western blot analysis of rat brain (lanes 1 and 4), rat cortex (lanes 2 and 5) and mouse brain (lanes 3 and 6) lysates: 1-3. Anti-CNTFRa (extracellular) antibody, (1:200). 4-6. Anti-CNTFRa (extracellular) antibody, preincubated with the control peptide antigen.