

Product datasheet for **TA328780**

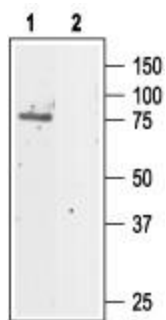
Clcn5 Rabbit Polyclonal Antibody

Product data:

Product Type:	Primary Antibodies
Applications:	WB
Recommended Dilution:	WB: 1:200-1:2000; IHC: 1:100-1:3000
Reactivity:	Rat
Host:	Rabbit
Clonality:	Polyclonal
Immunogen:	Peptide CDYENHFNTSKGGEL, corresponding to amino acid residues 401-415 of rat CLC5. Extracellular.
Formulation:	Lyophilized. Concentration before lyophilization ~0.8mg/ml (lot dependent, please refer to CoA along with shipment for actual concentration). Buffer before lyophilization: Phosphate buffered saline (PBS), pH 7.4, 1% BSA, 0.025% NaN ₃ .
Reconstitution Method:	Add 50 ul double distilled water (DDW) to the lyophilized powder.
Purification:	Affinity purified on immobilized antigen.
Conjugation:	Unconjugated
Storage:	Store at -20°C as received.
Stability:	Stable for 12 months from date of receipt.
Gene Name:	chloride voltage-gated channel 5
Database Link:	NP_058802 Entrez Gene 25749 Rat P51796
Background:	CLC5 is a member of the voltage-dependent Cl channel family that includes nine known members. Based on sequence similarity, CLC5 is closely linked to the CLC3 and CLC4 subunits. Mutations in the CLC5 gene cause Dent's disease a X-linked renal disorder. CLC-5 is mainly found in intracellular vesicles, particularly in early endosomes vesicles, where it is believed to contribute to their acidification. The channel is mainly expressed in the kidney, although it has been found also in small intestine, brain and liver.
Synonyms:	CIC-5; CLC5; CLCK2; DENTS; hCIC-K2; hCIC-K2; NPHL1; NPHL2; OTTHUMP00000023279; OTTHUMP00000023281; XLRH; XRN



[View online »](#)

Product images:

Western blot analysis of rat kidney lysate: 1. Anti-CLC-5 antibody, (1:200). 2. Anti-CLC-5 antibody, preincubated with the control peptide antigen.