

Product datasheet for **TA328733**

Trpc6 Rabbit Polyclonal Antibody

Product data:

Product Type:	Primary Antibodies
Applications:	IHC, WB
Recommended Dilution:	WB: 1:200-1:2000; IHC: 1:100-1:3,000; FC: 1:50-1:600
Reactivity:	Human, Mouse, Rat
Host:	Rabbit
Clonality:	Polyclonal
Immunogen:	Peptide (C)RRNESQDYLLMDELG, corresponding to amino acid residues 24-38 of mouse TRPC6.Â Intracellular, N-terminus.
Formulation:	Lyophilized. Concentration before lyophilization ~0.8mg/ml (lot dependent, please refer to CoA along with shipment for actual concentration). Buffer before lyophilization: phosphate buffered saline (PBS), pH 7.4, 1% BSA, 0.05% NaN ₃ .
Reconstitution Method:	Add 50 ul double distilled water (DDW) to the lyophilized powder.
Purification:	Affinity purified on immobilized antigen.
Conjugation:	Unconjugated
Storage:	Store at -20°C as received.
Stability:	Stable for 12 months from date of receipt.
Gene Name:	transient receptor potential cation channel, subfamily C, member 6
Database Link:	NP_038866 Entrez Gene 7225 Human Entrez Gene 89823 Rat Entrez Gene 22068 Mouse Q61143



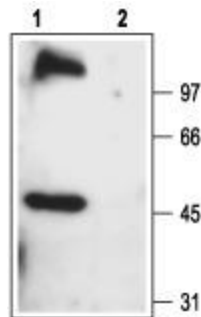
[View online »](#)

Background:

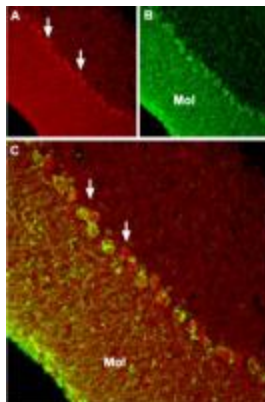
The Transient Receptor Potential (TRP) superfamily is one of the largest ion channel families and consists of diverse groups of proteins. In mammals, about 28 genes encode the TRP ion channel subunits. The mammalian TRP superfamily comprises six subfamilies known as the TRPC (canonical), TRPV (vanilloid), TRPM (melastatin), TRPML (mucolipins), TRPP (polycystin) and the TRPA (ANKTM1) ion channels. The TRPC subfamily consists of seven proteins named TRPC1 to 7 which can be further divided into four subgroups based on their sequence homology and functional similarities: 1. TRPC1. 2. TRPC4 and TRPC5. 3. TRPC3, TRPC6, TRPC7. 4. TRPC2. They are highly expressed in the central nervous system and to a lesser extent in peripheral tissues. TRPC6 can form heterotetramers with TRPC3 and TRPC7. It is primarily expressed in brain, lung and muscle. High levels of expression of the channel were also found in human platelets. Recently it was reported that TRPC6 is also expressed in the kidney where a mutated channel has been implicated in kidney failure disease.

Synonyms:

FLJ11098; FLJ14863; FSGS2; TRP6

Product images:

Western blot analysis of rat brain membranes: 1. Anti-TRPC6 antibody, (1:200). 2. Anti-TRPC6 antibody, preincubated with the control peptide antigen.



Expression of TRPC6 in mouse cerebellum. Immunohistochemical staining of mouse cerebellum using Anti-TRPC6 antibody. A. TRPC6 (red) appears in Purkinje cells (arrows) and in the molecular (Mol) layer. B. Staining with mouse anti-parvalbumin in the same brain section. C. Confocal merge of TRPC6 and PV demonstrates partial co-localization in the Purkinje and the molecular layers.