

Product datasheet for **TA328687**

KCNA3 Rabbit Polyclonal Antibody

Product data:

Product Type:	Primary Antibodies
Applications:	FC, WB
Recommended Dilution:	WB: 1:200-1:2000; IHC: 1:100-1:3,000; FC: 1:50-1:600
Reactivity:	Human, Mouse, Rat
Host:	Rabbit
Clonality:	Polyclonal
Immunogen:	Peptide KDYPASTSQDSFEA(C), corresponding to amino acid residues 263-276 of human Kv1.3.Extracellular loop between domains S1 and S2.
Formulation:	Lyophilized. Concentration before lyophilization ~0.8mg/ml (lot dependent, please refer to CoA along with shipment for actual concentration). Buffer before lyophilization: phosphate buffered saline (PBS), pH 7.4, 1% BSA, 0.05% NaN3.
Reconstitution Method:	Add 50 ul double distilled water (DDW) to the lyophilized powder.
Purification:	Affinity purified on immobilized antigen.
Conjugation:	Unconjugated
Storage:	Store at -20°C as received.
Stability:	Stable for 12 months from date of receipt.
Gene Name:	potassium voltage-gated channel subfamily A member 3
Database Link:	NP_002223 Entrez Gene 16491 Mouse Entrez Gene 29731 Rat Entrez Gene 3738 Human P22001
Background:	KV1.3 belongs to the Shaker family of voltage-dependent K ⁺ channels. The channel is widely expressed in the brain, lung and osteoclasts and in several cell populations of hematopoietic origin. It is in these cells (particularly T lymphocytes) that KV1.3 function has centered a lot of attention. It was found that KV1.3 is the main channel Responsible for maintaining the resting potential in quiescent cells and regulating the Ca ²⁺ signaling that is indispensable for normal T lymphocyte activation. Based on the central role of KV1.3 in regulating the initiation of an immune response, the channel has been recognized as a potential target for immunosuppressant drugs. The central role of KV1.3 in immune system cells created a real need for a specific antibody that would be able to work in flow cytometry applications.

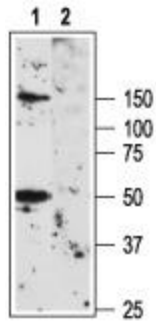


[View online »](#)

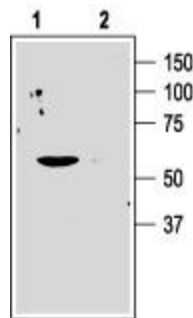
Synonyms: HGK5; HLK3; HPCN3; HUKIII; KV1.3; MK3; PCN3

Protein Families: Druggable Genome, Ion Channels: Potassium, Transmembrane

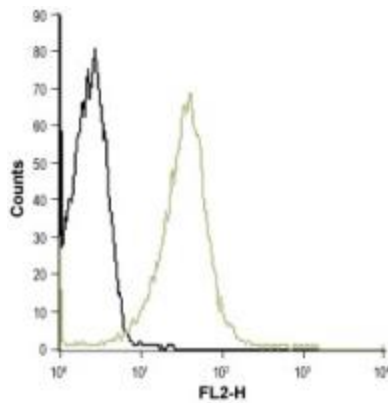
Product images:



Western blot analysis of rat brain membranes: 1. Anti-Kv1.3 (extracellular) antibody, (1:500). 2. Anti-Kv1.3 (extracellular) antibody, preincubated with the control peptide antigen.



Western blot analysis of human Jurkat T cells: 1. Anti-KV1.3 (extracellular) antibody, (1:200) 2. Anti-KV1.3 (extracellular) antibody, preincubated with the control peptide antigen



Indirect flow cytometry analysis of live intact human T cell leukemia (Jurkat) cell line: black line, Cells + goat-anti-rabbit-PE. green line, Cells + Anti-Kv1.3 (extracellular) antibody, (1:25) + goat-anti-rabbit-PE.