

Product datasheet for **TA328685**

TRPM1 Rabbit Polyclonal Antibody

Product data:

Product Type:	Primary Antibodies
Applications:	WB
Recommended Dilution:	WB: 1:200-1:2000
Reactivity:	Human
Host:	Rabbit
Clonality:	Polyclonal
Immunogen:	Peptide (C)EEKKVKKEKASTETE, corresponding to amino acid residues 1518-1533 of human TRPM1.Â Intracellular, C-terminus.
Formulation:	Lyophilized. Concentration before lyophilization ~0.8mg/ml (lot dependent, please refer to CoA along with shipment for actual concentration). Buffer before lyophilization: Phosphate buffered saline (PBS), pH 7.4, 1% BSA, 0.05% NaN3.
Reconstitution Method:	Add 50 ul double distilled water (DDW) to the lyophilized powder.
Purification:	Affinity purified on immobilized antigen.
Conjugation:	Unconjugated
Storage:	Store at -20°C as received.
Stability:	Stable for 12 months from date of receipt.
Gene Name:	transient receptor potential cation channel subfamily M member 1
Database Link:	NP_002411 Entrez Gene 4308 Human Q7Z4N2



[View online »](#)

Background:

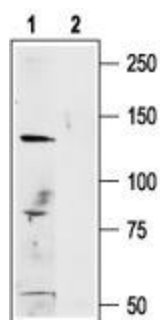
The mammalian melastatin-related transient receptor potential (TRPM) is a subfamily of the TRP family. The family was named after the first discovered member melastatin (TRPM1) whose gene was identified in metastatic and benign melanomas. The TRPM family consist of eight members designated as TRPM1-8 that can be further divided into four pairs: TRPM1 and TRPM3; TRPM2 and TRPM8; TRPM4 and TRPM5; and TRPM6 and TRPM7. The TRPM proteins share structural homology with other members of the TRP superfamily channels; six putative transmembrane domains, and cytoplasmic N-terminus and C-terminus. However, due to their long N-terminus and C-terminus they were also named the long TRP channel family. TRPM channels were suggested to play a role in tumourigenesis, proliferation and differentiation. Recently, TRPM1 was found to be down-regulated in a highly metastatic line. The loss of TRPM1 expression has been reported to be correlated to melanoma aggressiveness. Two alternative splice variants of TRPM1 were reported; short (TRPM1-S) and long (TRPM1-L). The TRPM1-S was described to be expressed at human melanocyte and mainly in metastatic melanoma cell lines. While TRPM1-L is expressed at murine CNS.

Synonyms:

CSNB1C; LTRPC1; MLSN1

Protein Families:

Druggable Genome, Ion Channels: Transient receptor potential, Transmembrane

Product images:

Western blot analysis of A875 (human melanoma cell line) lysate: 1. Anti-Human TRPM1 antibody, (1:200). 2. Anti-Human TRPM1 antibody, preincubated with the control peptide antigen.