

Product datasheet for **TA328649**

P2Y12 (P2RY12) Rabbit Polyclonal Antibody

Product data:

Product Type:	Primary Antibodies
Applications:	FC, IF, WB
Recommended Dilution:	WB: 1:200-1:2000; FC: 1:50-1:600
Reactivity:	Human, Rat
Host:	Rabbit
Clonality:	Polyclonal
Immunogen:	Peptide CTAENTLFYVKES, corresponding to amino acid residues 270-282 of human P2Y12 receptor. 3rd extracellular loop.
Formulation:	Lyophilized. Concentration before lyophilization ~0.8mg/ml (lot dependent, please refer to CoA along with shipment for actual concentration). Buffer before lyophilization: Phosphate buffered saline (PBS), pH 7.4, 1% BSA, 0.05% NaN3.
Reconstitution Method:	Add 50 ul double distilled water (DDW) to the lyophilized powder.
Purification:	Affinity purified on immobilized antigen.
Conjugation:	Unconjugated
Storage:	Store at -20°C as received.
Stability:	Stable for 12 months from date of receipt.
Gene Name:	purinergic receptor P2Y12
Database Link:	NP_073625 Entrez Gene 64803 Rat Entrez Gene 64805 Human Q9H244
Background:	The P2Y receptors belong to the G-protein coupled receptors superfamily. They mediate the actions of the extracellular nucleotides (ATP, ADP, UTP and UDPA. Eight functional mammalian P2Y receptors have been described: P2Y1, P2Y2, P2Y4, P2Y6, P2Y11, P2Y12, P2Y13, and the UDP-glucose receptor, now renamed P2Y14. The P2Y12 receptor is co-expressed with P2Y1 receptor on platelets leading to shape change, aggregation, and rise in intracellular Ca ²⁺ upon activation. The only other expression of P2Y12 was found in brain, according to results of reverse transcription-polymerase chain reaction and northern blotting. The P2Y12 receptor has become a target for potential therapeutic drugs for the treatment of thromboembolism and other clotting disorders.



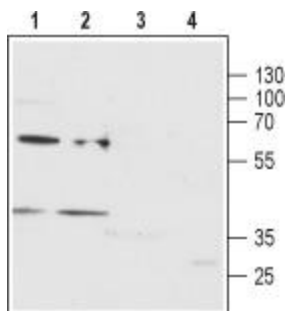
[View online »](#)

Synonyms: ADPG-R; BDPLT8; HORK3; P2T(AC); P2Y(12)R; P2Y(AC); P2Y(ADP); P2Y(cyc); P2Y12; SP1999

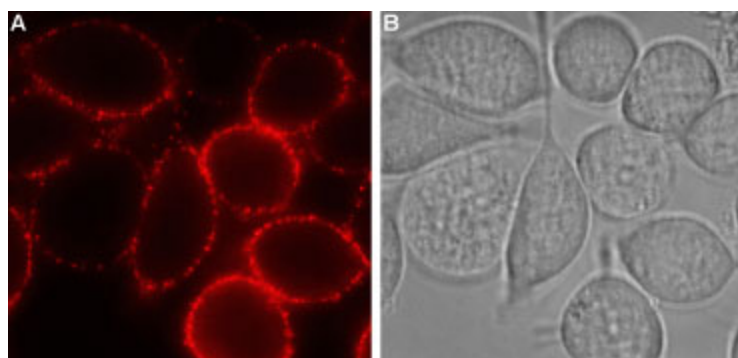
Note: This antibody was tested in live cell imaging. Please see IF/ICC data for detail.

Protein Families: Druggable Genome, GPCR, Transmembrane

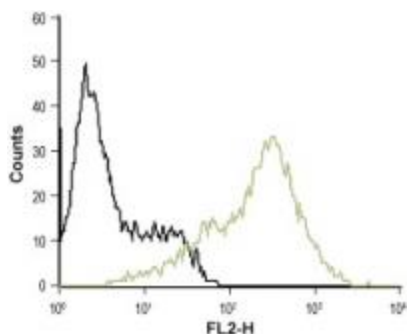
Product images:



Western blot analysis of rat brain membrane (lanes 1 and 3) and MEG-O1 (lanes 2 and 4) cell line lysate: 1-2. Anti-P2Y12 Receptor (extracellular) antibody, (1:200). 3-4. Anti-P2Y12 Receptor (extracellular) antibody, preincubated with the control peptide antigen.



Expression of P2Y12 in rat RBL cells. Immunocytochemical staining of intact living rat basophilic leukemia (RBL) cells using. A. Extracellular staining of cells using Anti-P2Y12 (extracellular) antibody, (1:100) followed by goat anti-rabbit-AlexaFluor-594 secondary antibody (red). B. Live view of the cells.



Indirect flow cytometry analysis of MEG-O1 living cells: black line: Unstained cells. Green line: Cells + Anti-P2Y12 Receptor (extracellular) antibody, (5-10 ug/1x10⁶ cells).