

Product datasheet for **TA328626**

P2Y1 (P2RY1) Rabbit Polyclonal Antibody

Product data:

Product Type:	Primary Antibodies
Applications:	FC, IF, IHC, WB
Recommended Dilution:	WB: 1:200-1:2000; FC: 1:50-1:600
Reactivity:	Human, Rat
Host:	Rabbit
Clonality:	Polyclonal
Immunogen:	Peptide SDEYLRSYFIYSMC, corresponding to amino acid residues 207-220 of human P2Y1 Receptor. 2nd extracellular loop.
Formulation:	Lyophilized. Concentration before lyophilization ~0.8mg/ml (lot dependent, please refer to CoA along with shipment for actual concentration). Buffer before lyophilization: Phosphate buffered saline (PBS), pH 7.4, 1% BSA, 0.05% NaN3.
Reconstitution Method:	Add 50 ul double distilled water (DDW) to the lyophilized powder.
Purification:	Affinity purified on immobilized antigen.
Conjugation:	Unconjugated
Storage:	Store at -20°C as received.
Stability:	Stable for 12 months from date of receipt.
Gene Name:	purinergic receptor P2Y1
Database Link:	NP_002554 Entrez Gene 25265 Rat Entrez Gene 5028 Human P47900
Background:	The P2Y receptors belong to the G-protein coupled receptors superfamily. P2Y receptors mediate the actions of the extracellular nucleotides (ATP, ADP, UTP and UDP) and regulate several physiologic responses, among them, cardiac function, platelet aggregation and SMC proliferation. The mammalian P2Y family currently includes eight functional receptors; P2Y1, P2Y2, P2Y4, P2Y6, P2Y11, P2Y12, P2Y13, and the UDP-glucose receptor, now renamed P2Y14. P2Y1 receptor is abundantly expressed in a number of tissues. In platelets, P2Y1 receptor is co-expressed with P2Y12 receptor, responsible for the initial shape change, aggregation, and rise in intracellular Ca ²⁺ upon activation in response to ADP.



[View online »](#)

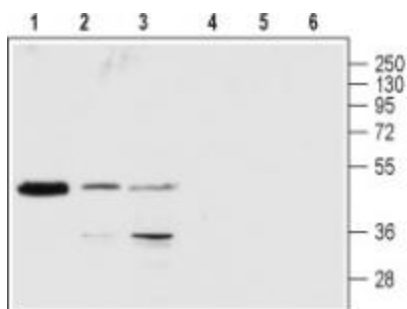
Synonyms: P2Y1

Note: This antibody was tested in live cell imaging. Please see IF/ICC data for detail.

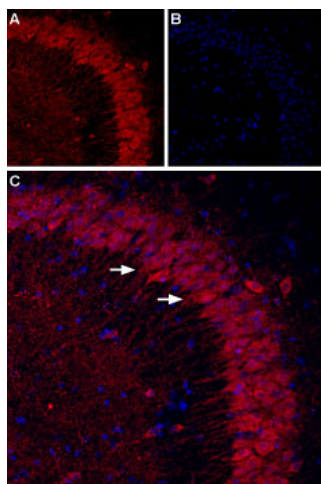
Protein Families: Druggable Genome, GPCR, Transmembrane

Protein Pathways: Neuroactive ligand-receptor interaction

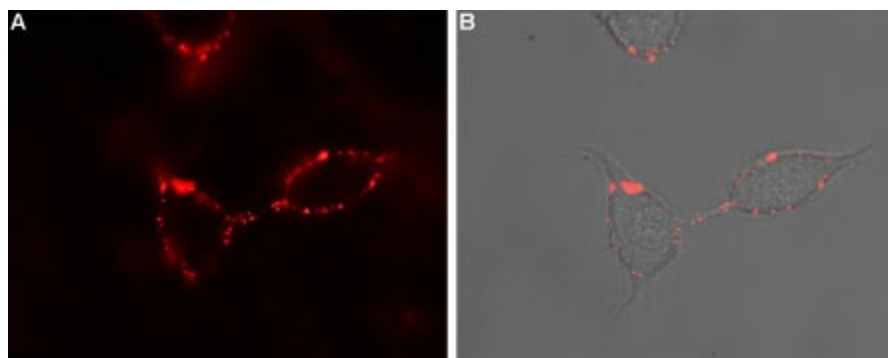
Product images:



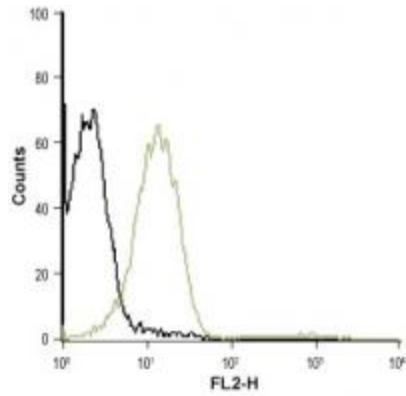
Western blot analysis of rat brain (lanes 1 and 4), Jurkat (lanes 2 and 5) and K-562 (lanes 3 and 6) lysates: 1-3. Anti-P2Y1 Receptor (extracellular) antibody, (1:200). 4-6. Anti-P2Y1 Receptor (extracellular) antibody, preincubated with the control peptide antigen.



Indirect flow cytometry analysis of Jurkat (human acute T cell leukemia) living cells: black line, Unstained cells. green line, Cells stained + Anti-P2Y1 Receptor (extracellular) antibody, (5 ug/5x10⁵ cells).



Expression of P2Y1 receptor in rat PC12 cells. Immunocytochemical staining of intact living rat pheochromocytoma PC12 cells. A. Extracellular staining of cells using Anti-P2Y1 Receptor (extracellular) antibody (TA328626), (1:50) followed by goat anti-rabbit-AlexaFluor-594 secondary antibody (red). B. Merge of extracellular staining with live view of the cells.



Indirect flow cytometry analysis of Jurkat (human acute T cell leukemia) living cells: black line: Unstained cells. Green line: Cells stained + Anti-P2Y1 Receptor (extracellular) antibody, (5 ug/5x10⁵ cells)