

Product datasheet for **TA328612**

CLIC1 Rabbit Polyclonal Antibody

Product data:

Product Type:	Primary Antibodies
Applications:	IF, WB
Recommended Dilution:	WB: 1:200-1:2000; FC: 1:50-1:600
Reactivity:	Human, Rat
Host:	Rabbit
Clonality:	Polyclonal
Immunogen:	Peptide (C)RGFTIPEAFRGVHR, corresponding to amino acid residues 195-208 of human CLIC1. Intracellular, C-terminus.
Formulation:	Lyophilized. Concentration before lyophilization ~0.8mg/ml (lot dependent, please refer to CoA along with shipment for actual concentration). Buffer before lyophilization: Phosphate buffered saline (PBS), pH 7.4, 1% BSA, 0.05% NaN ₃ .
Reconstitution Method:	Add 50 ul double distilled water (DDW) to the lyophilized powder.
Purification:	Affinity purified on immobilized antigen.
Conjugation:	Unconjugated
Storage:	Store at -20°C as received.
Stability:	Stable for 12 months from date of receipt.
Gene Name:	chloride intracellular channel 1
Database Link:	NP_001279 Entrez Gene 406864 Rat Entrez Gene 1192 Human O00299

[View online »](#)

Background:

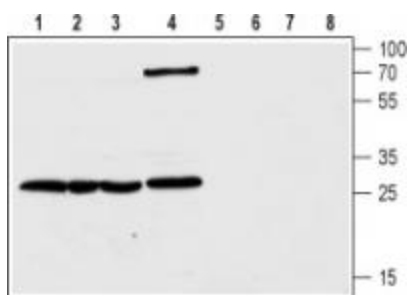
Chloride intracellular channel (CLIC) is a family of proteins encoded by six different genes (CLIC1-6). The localization of the various CLIC channels remains elusive and controversial since they can be either found in a soluble form in the cytoplasm or as integral membrane proteins (in intracellular compartments such as the nuclear membrane or the endoplasmic reticulum for example, or associate to the plasma membrane) via their single transmembrane domain. When membrane associated, CLIC channels indeed function as ion channels (enabling the passage of Cl⁻ ions). Non-channel functions are also attributed to CLICs and include cell cycle regulation, cell differentiation, and apoptosis. These different roles depend whether CLICs are membrane bound or cytosolic. CLIC1, which was first identified in nuclear membranes, is detected in the epithelia of airways, the gall bladder, pancreas, stomach, small intestine and colon. CLIC1 was also found to be expressed in the endothelium where it plays a role in cell growth and migration.

Synonyms:

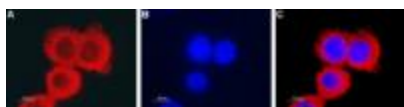
G6; NCC27

Protein Families:

Druggable Genome, Ion Channels: Other

Product images:


Western blot analysis of human colorectal adenocarcinoma HT-29 (lanes 1 and 5), T-84 (lanes 2 and 6), human pancreatic carcinoma PANC-1 (lanes 3 and 7) and rat kidney (lanes 4 and 8) lysates: 1- 4. Anti-CLIC1 antibody, (1:200). 5- 8. Anti-CLIC1 antibody, preincubated with the control peptide antigen.



Expression of CLIC1 human colorectal adenocarcinoma HT-29 cells. Immunocytochemical staining of fixed and permeabilized human colorectal adenocarcinoma HT-29 cells. A. Cells were stained with Anti-CLIC1 antibody, (1:200), followed by goat anti-rabbit-AlexaFluor-594 secondary antibody (red). B. Cell nuclei were visualized using Hoechst 33342 (blue). C. Merge of the two images.