

Product datasheet for **TA328595**

Kitlg Rabbit Polyclonal Antibody

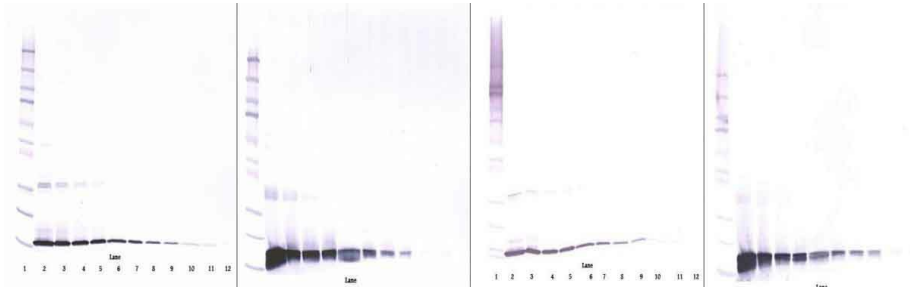
Product data:

Product Type:	Primary Antibodies
Applications:	ELISA, WB
Recommended Dilution:	WB: 0.1-0.2ug/mL, ELISA: 0.25-2ug/mL
Reactivity:	Rat
Host:	Rabbit
Isotype:	IgG
Clonality:	Polyclonal
Immunogen:	E.coli derived Recombinant Rat SCF
Formulation:	A sterile filtered antibody solution was lyophilized from PBS, pH 7.2.
Purification:	Produced from sera of rabbits immunized with highly pure recombinant Rat SCF. Anti-Rat SCF specific antibody was purified by affinity chromatography employing an immobilized Rat SCF matrix.
Conjugation:	Unconjugated
Storage:	Store at -20°C as received.
Stability:	Stable for 12 months from date of receipt.
Gene Name:	KIT ligand
Database Link:	NP_068615 Entrez Gene 60427 Rat P21581
Synonyms:	DKFZp686F2250; FPH2; Kitl; KL-1; MGF; SCF; SF; SHEP7
Note:	Neutralization: To yield one-half maximal inhibition [ND50] of the biological activity of rat SCF (50.0 ng/ml), a concentration of 1.2-1.8 ug/ml of this antibody is required.

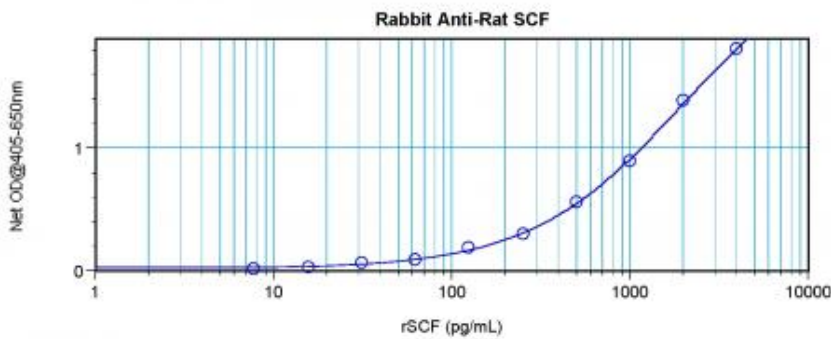


[View online »](#)

Product images:



To detect rat SCF by sandwich ELISA (using 100ul/well antibody solution) a concentration of 0.5 - 2.0 ug/ml of this antibody is required. This antigen affinity purified antibody, in conjunction with Biotinylated Anti-Rat SCF ([TA328594]) as a detection antibody, allows the detection of at least 0.2 - 0.4 ng/well of recombinant rat SCF.



To detect rat SCF by sandwich ELISA (using 100ul/well antibody solution) a concentration of 0.5 - 2.0 ug/ml of this antibody is required. This antigen affinity purified antibody, in conjunction with Biotinylated Anti-Rat SCF ([TA328594]) as a detection antibody, allows the detection of at least 0.2 - 0.4 ng/well of recombinant rat SCF.