

## Product datasheet for **TA328594**

### Kitlg Rabbit Polyclonal Antibody

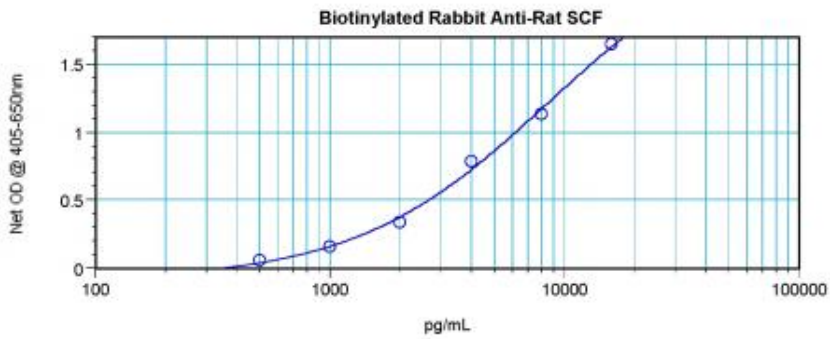
#### Product data:

Product Type:	Primary Antibodies
Applications:	ELISA
Recommended Dilution:	WB: 0.1-0.2ug/mL, ELISA: 0.25-2ug/mL
Reactivity:	Rat
Host:	Rabbit
Isotype:	IgG
Clonality:	Polyclonal
Immunogen:	E.coli derived Recombinant Rat SCF
Formulation:	A sterile filtered antibody solution was lyophilized from PBS, pH 7.2.
Purification:	Produced from sera of rabbits immunized with highly pure recombinant Rat SCF. Anti-Rat SCF specific antibody was purified by affinity chromatography and then biotinylated.
Conjugation:	Biotin
Storage:	Store at -20°C as received.
Stability:	Stable for 12 months from date of receipt.
Gene Name:	KIT ligand
Database Link:	<a href="#">NP_068615</a> <a href="#">Entrez Gene 60427 Rat</a> <a href="#">P21581</a>
Synonyms:	DKFZp686F2250; FPH2; Kitl; KL-1; MGF; SCF; SF; SHEP7

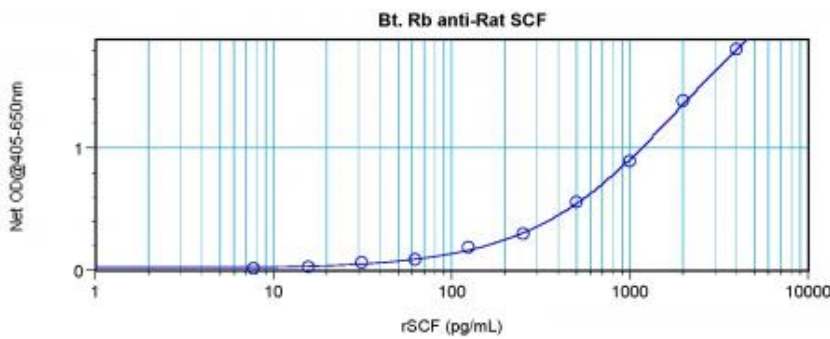


[View online »](#)

Product images:



To detect rat SCF by direct ELISA (using 100 ul/well antibody solution) a concentration of 0.25-1.0 ug/ml of this antibody is required. This biotinylated polyclonal antibody, in conjunction with compatible secondary reagents, allows the detection of at least 0.2-0.4 ng/well of recombinant rat SCF.



To detect rat SCF by sandwich ELISA (using 100 ul/well antibody solution) a concentration of 0.25-1.0 ug/ml of this antibody is required. This biotinylated polyclonal antibody, in conjunction with Polyclonal Anti-Rat SCF ([TA328595]) as a capture antibody, allows the detection of at least 0.2-0.4 ng/well of recombinant rat SCF.