

## Product datasheet for **TA328591**

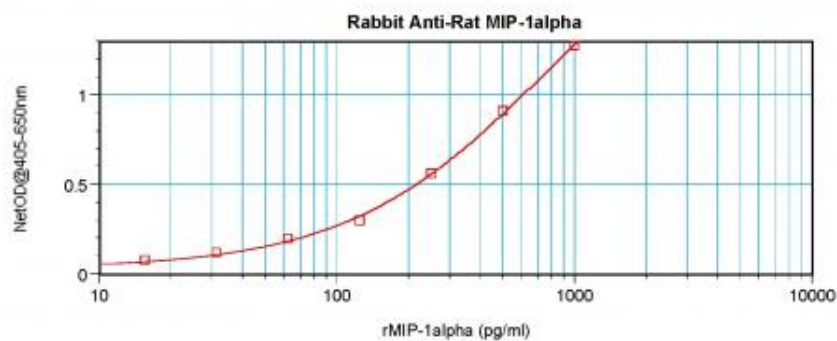
### Ccl3 Rabbit Polyclonal Antibody

#### Product data:

Product Type:	Primary Antibodies
Applications:	ELISA
Recommended Dilution:	WB: 0.1-0.2ug/mL, ELISA: 0.25-2ug/mL
Reactivity:	Rat
Host:	Rabbit
Isotype:	IgG
Clonality:	Polyclonal
Immunogen:	E.coli derived Recombinant Rat MIP-1 $\alpha$ (CCL3)
Formulation:	A sterile filtered antibody solution was lyophilized from PBS, pH 7.2.
Purification:	Produced from sera of rabbits pre-immunized with highly pure recombinant Rat MIP1alpha. Anti-Rat MIP1alpha specific antibody was purified by affinity chromatography employing immobilized Rat MIP1alpha matrix.
Conjugation:	Unconjugated
Storage:	Store at -20°C as received.
Stability:	Stable for 12 months from date of receipt.
Gene Name:	C-C motif chemokine ligand 3
Database Link:	<a href="#">NP_037157</a> <a href="#">Entrez Gene 25542 Rat P50229</a>
Synonyms:	G0S19-1; LD78ALPHA; MIP-1-alpha; MIP1A; SCYA3; SIS-beta
Note:	Neutralization: To yield one-half maximal inhibition [ND50] of the biological activity of Rat MIP-1alpha (100 ng/ml), a concentration of 8.0-10.0 $\leq$ ug/ml of this antibody is required.



[View online »](#)

**Product images:**

To detect Rat MIP-1alpha; by sandwich ELISA (using 100 ul/well antibody solution) a concentration of 0.5 - 2.0 ug/ml of this antibody is required. This antigen affinity purified antibody, in conjunction with Biotinylated Anti-Rat MIP-1alpha; ([TA328590]) as a detection antibody, allows the detection of at least 0.2 - 0.4 ng/well of recombinant Rat MIP-1alpha;.